

AP100US v2018.1.0 Update & Release Notes



Thank you for purchasing Amada's AP100US! These release notes outline the new features or changes in the latest version of the software as well as information regarding updating to the current version. These modifications are in response to customer feedback. The AP100US CAD/CAM System is licensed software, and cannot be freely distributed. Please read the license agreement that accompanies the software.

AP100US now supports SDDJ v3.6 and SDDJ v5.1.

Contents

| | |
|--|----|
| SYSTEM REQUIREMENTS..... | 3 |
| POST-RELEASE ENHANCEMENTS - v2018.1.0..... | 4 |
| NEW FEATURES v2018..... | 4 |
| POST-RELEASE ENHANCEMENTS - v2016.1.2..... | 6 |
| POST-RELEASE ENHANCEMENTS - v2016.1.1..... | 7 |
| POST-RELEASE ENHANCEMENTS - V2016.01..... | 7 |
| NEW FEATURES v2016..... | 8 |
| POST-RELEASE ENHANCEMENTS – V2014.1.04a..... | 11 |
| POST-RELEASE ENHANCEMENTS – V2014.1.04..... | 11 |
| POST-RELEASE ENHANCEMENTS – V2014.1.02..... | 13 |
| POST-RELEASE ENHANCEMENTS – V2014.1..... | 13 |
| NEW FEATURES v2014..... | 13 |
| FIXED ISSUES - v2018.1.0..... | 16 |
| FIXED ISSUES - v2016.1.4..... | 18 |
| FIXED ISSUES - v2016.1.3..... | 19 |
| FIXED ISSUES - v2016.1.2..... | 20 |
| FIXED ISSUES - v2016.1.1..... | 20 |
| FIXED ISSUES - v2016.01..... | 21 |
| FIXED ISSUES - v2014.1.04b..... | 22 |
| FIXED ISSUES - v2014.1.04a..... | 22 |
| FIXED ISSUES - v2014.1.04..... | 22 |
| FIXED ISSUES - v2014.1.03..... | 24 |
| FIXED ISSUES - v2014.1.02..... | 25 |
| FIXED ISSUES - v2014.1..... | 26 |
| Update Installation via Online Update..... | 28 |
| Upgrade Installation via Online Update..... | 34 |
| Update Installation via DVD Install..... | 40 |

SYSTEM REQUIREMENTS

| Hardware | Description |
|------------------|---|
| CPU | Intel® or AMD Athlon™ dual-core processor, 2.0 GHz or higher. |
| Memory | 8 GB of RAM (16 GB or more recommended). |
| Hard Disk | Minimum of 10 GB of free hard disk space. |
| DVD DRIVE | A DVD drive is required for installation. |
| Video Display | 1,024 x 768 display resolution with true color (1,600 x 1,050 with true color recommended). |
| Browser | Microsoft® Internet Explorer® 9.0 or later web browser. |
| Protection Block | You must install the protection block before operating the software. |
| Pointing Device | Serial or USB mouse with wheel button. |

| Software | Description |
|---|---|
| Operating System (32 / 64 bit supp.) | Microsoft® Windows® 7, 8 & 10 Ultimate, Professional, or Home Premium. |
| Sentinel Driver | You must install the Sentinel Driver (v7.6 and above) before you can install the CAD/CAM System or optional software packages. |
| Network Installation | For a network installation, the server computer must be running the server versions of Windows 2003, 2008 or 2012. It may also be necessary to update the Sentinel Driver on the server computer. |
| Supported Software | SolidWorks® 2017, SolidEdge® ST6, AutoCAD® 2017, Autodesk® Inventor 2017, Pro/E® Creo 3. |

Note: If both SolidWorks and SolidEdge are installed on the same system, an OLE integration conflict may occur.

POST-RELEASE ENHANCEMENTS - v2018.1.0

1. Cutting Conditions

New color options for Outside Cuts and Fast Cuts that function with Amada drivers have been added to the Material file>Condition Tables tab.

2. DXF/DWG

The ODA library for importing and exporting DXF/DWG drawings is now upgraded to version 2018.

3. Installer

The AP100US installer has now been upgraded to InstallShield version 2010 and newer.

4. Material Library

The user may now edit Material Thickness in the Material Library file list panel.

5. Fast Cut

To enable Fast Cut, the user must click Fast Cut Define (or Fence Define) and then manually define a grid. When this is done the system automatically applies the most suitable Fast Cut option.

NEW FEATURES v2018

1. New Context Sensitive Help delivery system

Hover the cursor over an icon in the Ribbon Interface to open a mini Help window, giving basic instructions and a sample image showing how the option functions. Hitting <F1> opens that page in the online Help file.

2. Output Stack, Pallet and Report Options added to Preferences>NC file

The user now has the option of outputting the part stack report (included a pallet graphic) and layout into the NC file, which can then be viewed and/or printed as needed.

3. Undo/Redo options now cover Extend, Trim, Delete & Blend commands

To enhance functionality, the AP100US Undo/Redo options now apply to the Extend, Trim, Delete and Blend commands found on the Edit menu.

4. Powerful Slug Destroy option added

Slug Destroy enables the user to set parameters for slugs that will be completely destroyed during laser cutting. Slugs can be targeted according to size and pattern type and even the slug destroy method can be specified.

5. OLE Preview now functions for Autodesk Inventor®

In previous versions of AP100US, the OLE Preview option was only integrated with SolidWorks® and Pro/Engineer®. Now the CAD/CAM program supports OLE Preview for Autodesk Inventor and SolidEdge.

6. Automation Simulator supports part removal arms greater than 70"

To meet the needs of companies using Part Sorting Robots (PSR), Amada supports robot arms longer than 70 inches.

7. Select Separate Start Corners for Individual Groups

When Common Cutting multiple gridded groups, the user may choose a unique starting point for each group.

8. Improved Snap Point Selection for Special Tool hits

AP100US more accurately snaps not only to the default point, but also to additional points placed by the user.

9. After Defining a Special Tool, Patterns are Grouped

When patterns are defined as a Special Tool, they are automatically changed to a group.

10. Hook Lead In Type Added to Split Sheet option

The user can now select from Line, Hook or None as lead in options.

11. Export Sheet Files in DXF format

Sheet files can now be exported into the DXF format for use in compatible software.

12. Manual Trace OFF to Control Laser Head

Enabling this option for corner notches on parts allows the laser head to momentarily ignore a hole and continue lasing, thus avoiding a possible laser head/material collision.

13. Material Library

The Material Library allows the user to define and organize the Sheet Metal Stock (material) that exists in their shop. All materials and condition files used by AP100US can be created, stored & edited in this one utility.

14. Single-sheet Nesting Options

Use these options on the Sheet tab to nest a single sheet directly in the CAD/CAM program. Based on the powerful Sheet Wizard nesting engine, this scaled-down option makes most of the nesting decisions.

15. Clipboard

With Clipboard option the user can copy and place parts from an existing sheet onto other sheets. This allows the user to easily access parts and part groups that are often needed.

16. Choose Optimal Nesting Results Before Nesting

When the Start Nesting button in Sheet Wizard is clicked, the program launches the Choosing Nesting Results window, which allows the user to make a selection from various automatically calculated nesting result options.

17. Identical Patterns can be Deleted Simultaneously

When Change All Similar Patterns in Edit>Pattern Properties is set to Yes, all identical patterns are highlighted and can be deleted at one time.

18. Straight Edge Cut Supports Counter-clockwise Cutting

If the user enables this option, Straight Edge Common Cutting runs clockwise. If the option is disabled, then common cutting is processed counter-clockwise.

19. Punch Condition Mapping

To bridge the functionality gap between Amada legacy and up-to-date drivers, this option "swaps" legacy driver conditions with those in a current driver.

20. Work Chute Unloading Improvements

With a Combo machine, gridded parts will drop through the work chute column-by-column as the laser cuts parts out in even columns. For parts in frame kits the entire frame will drop through the work chute at once.

21. Save Parts to Original Directory

When using the "Save All Parts" feature, check ON this option to allow parts to be saved to their original directories. Leaving the option unchecked will save parts to the default PARTS folder.

22. Fast Cutting Improvements

Fast Cut options now include Delete All, which removes all Fast Cut selections and Fence Define, which allows users to select non-standard shapes, while avoiding adjacent patterns.

23. RunTime Accuracy Improved

When using the newest Amada Laser machines, accuracy for Run Time estimates of actual machine time has increased. In addition, the Run Time Details window contains more Runtime info.

24. Common Cutting with Multi-part picker for Combo Machines

Multi-part picking when Common Cutting in Straight Edge Cut for Combination machines is now supported.

25. Continuous Pickup after one Final Call and Cut

Continuous Pickup when Common Cutting in Straight Edge Cut for Combo machines is now supported.

26. Ultimate Cutting Optimization

The Optimize Cutting Path for Shutterless Mode Motion option allows the user to control parameters when optimizing the cutting path. Activate the option in the Sequence Info Panel.

27. Accurate Trace Line Display

In previous versions of AP100US, head movement trace lines in the CAD/CAM work area did not realistically show the actual head movement that occurs on a machine. In 2018 head movement now accurately displays.

POST-RELEASE ENHANCEMENTS - v2016.1.2**Cut Sequence**

1. Manual Trace off option allows user to toggle OFF the trace on corner notches, to prevent a possible laser head-sheet collision if the sensor in the head detects a hole. Works with Straight Common Cut selected.

Sheet Operations

2. Space, Ratio & Center Y options have been added to the settings in the Auto Grid Properties panel to enhance control of grids on a sheet. Synchronized with options in Sheet Layout Info>Auto Grid tab.

Report

3. The Revision number from Part Info will be output into the NC Report XML, PDF, Text & Stext files.

Runtime

4. An Adjustment Time option for overall runtime calculation has been added to the View Run Time dialog.

Unloading

5. Unload grouped parts when using Straight Common Cutting with a TK-C1 machine.

POST-RELEASE ENHANCEMENTS - v2016.1.1

Cut Sequence

1. The user can now select the Common Cutting Start corner for multiple straight edge cutting.

License

2. In previous versions, when the FabriWIN-S license was selected, the "Upper Right" Starting corner option was deliberately disabled for combo machines. Now in FW2016.1.1 this option is not disabled.

Sequence Features

3. Two new Microjoint placement options for row by row and part by part common cutting have been added.

Tool Assignment

4. After "Defining Special Tool," the pattern is automatically turned into a group pattern so that the special tool can be assigned successfully.

5. When assigning a tool, the snap points - especially the single points - should be enabled.

Unloading

6. In previous versions, when there was stacking information or an unload sequence, the Import ULD option in TK Info was disabled. Even when stacking info and unload sequence were removed, the option was still disabled. Now the Import ULD button is enabled when stacking information and unloading sequence have been deleted.

POST-RELEASE ENHANCEMENTS - V2016.01

Cutting Condition

1. The Edge E code now works at the right side of the sheet for Dynamic Split Sheet.

2. "Area Cut Sequence" logic has been changed. Previously it defaulted to X-Y path using "S" to set the shortest path. Now the area cut sequence defaults to shortest path.

Go to Assist

3. In 2016.01, the Online Contact and Online Assistance web link has been upgraded. When a user clicks on Online Contact, it will go to a new customer portal.

Hot Key

4. In 2016.01, F11 has been removed as a system key. It will be the default hotkey for Auto Grid in the Keyboard dialog. The user can remove or reassign F11 to another command.

Microjoint

5. Assigning a microjoint to an Ellipse shape for a cutting machine is supported.

6. When a user manually assigns a microjoint, the Start Point should move to the microjoint position automatically. If the microjoint is moved, the Start Point should move with it.

Report

7. "Zoom All Before Print" should not take effect all the time. When the user checks ON "Zoom All Before Print," the sheet view should first be zoomed before printing. If user checks it OFF, then it just prints what displays on the CAD/CAM screen in the template report or standard report.

Straight Common Cut

8. The logic for auto start corner in straight common cut is improved. When starting corner is set to Auto after the last inner split between parts, the start cutting of the grid boundary will be the closest perpendicularly.

9. Manual Split Sheet in the Common Cutting tab now functions for vertical and horizontal.

10. Because Straight Common Cut with a space is supported, a "Split Cut Inside Group" feature has been added.

Unload

11. In 2016.01, the user can manually unload gridded parts in a specific order and apply that same stacking order to the remaining parts on the sheet. This functions only on PSR machines, can only be applied to gridded parts that are not grouped, and is used when stacking.

Undo/Redo

12. Undo/Redo should also take effect for Manual Split in the Common Cutting tab.

Unload Simulation

13. In previous versions when Unload Simulation runs on a machine with a low performance video card, it may crash when Glow Effect status=ON. In 2016.01, the OpenGL code has been updated to avoid this.

User Interface

14. Text style in the CAD/CAM status bar will be retained, even if the user changes resolution.

NEW FEATURES v2016

1. Area Sequence option added to Punch menu

The Area Sequence option, which allows the user to add a sequence to an area when punching or cutting, is now available when using Punch and Combo machines.

2. Nesting Enhancement for Rectangular and True Shape Nesting

The user can now select to nest individual parts in Rectangular or True Shape (previously this applied to an entire sheet). This option is available in the CAD/CAM program, the Sheet Wizard and Job Wizard.

3. Nesting Reports Output can be toggled ON/OFF

Nesting report files are output automatically, which uses a lot of disk space. Now the user can toggle report output ON or OFF. This option is available in the CAD/CAM program, the Sheet Wizard and Job Wizard.

4. Runtime Details contain more precise info

In the Runtime Details window the Cut Path Time value has been divided into Cut Line Path Time, Cut Arc Path Time and Etch Time. This gives the user more control over the cutting and punching (for combo) processes.

5. Restore Pack-Up files option added to Job Wizard

Zip files auto-saved to the SupportFiles folder in the CAD/CAM installed folder can be accessed by the user to restore a project, or these files can be shared with other programmers.

6. Review and Edit Part CAD Info from the Save As window

When the user selects "Save As" for a part, the Part Info button opens up the Part Information window, allowing the user to review CAD info and make last-minute changes. This option is already available for Sheets.

7. Add Bend Comments in Part Info > Production Info window

In a newly added column, the user can add bend comments to be saved with the part info. This information is passed on to the press brake operation on Amada's ERP system.

8. View a Part with Angle Preview in the Open File window

A checkbox allows the user to view a part at the angle that it was saved with. The Part's angle value also displays.

9. Part Files can be Batch-opened in the Work Area

The CAD/CAM program supports the ability to batch open files (.prt, .dxf, .dwg) by selecting CTRL or SHIFT. This option is also available in the "Find" utility.

10. Report Folder contains all NC Report-related files

To make managing reports easier, when saving NC files the CAD/CAM program will save Report files in a separate Report folder in the CAD/CAM installed folder. This function is also in the Sheet Wizard and Job Wizard.

11. All Parts on a Sheet Saved with a Click

The Save All Parts option on the CAD/CAM Main Menu allows all parts on a sheet to be saved with one click.

12. Fast Cut for Laser Option Added

To dramatically improve the cutting run time for specific pattern types, the Fast Cut Settings option has been added to the Cut Sequence menu.

13. Work Chute Unloading Control for Parts in Frame Kits

To reduce overall machine time, when the CAD/CAM program detects that grouped parts in a frame kit are on the sheet, it will require the work chute to open/close once for all parts in that frame. (For all other parts the chute will open/close one time per part.)

14. Template Report Design (TRD) Module enhancement

A new Stacking template and several new data field options have been added, allowing users to create much more comprehensive customized reports.

15. Exporting Data Improved

To enhance compatibility, exporting data such as Tool, Material, Sheet and Part data from the CAD/CAM program to other software via CSV and XLS has been improved.

16. Customizable Ribbon User Interface

Style, location and size of the Ribbon User Interface icons can be easily customized by the user.

17. Operating Environment Greatly Improved

The CAD/CAM program will no longer use win.ini to configure its working environment. All supporting data and files are concentrated in the CAD/CAM installed folder, thus eliminating conflicts when running more than one instance of the program.

18. Identical Patterns are Highlighted

To ease identification of patterns on a sheet, identical patterns are highlighted in the same color when editing. Switch OFF this option and the same patterns can be edited individually.

19. Ribbon User Interface Installs Automatically

The Ribbon User Interface will now install automatically during installation. AP100US users will find that FabriSIM is also installed automatically when the CAD/CAM program is installed.

Note: While the outdated Classic and Modern user interfaces are still available, user documentation only covers the Ribbon interface.

20. Barcode Improvement

Barcode output now includes NC File Name and Next Operation in the CAD/CAM program, Sheet Wizard and Job Wizard.

21. U-Notch and Box-Notch - Assign Specific Tools

The user can now enable the program to assign specific tools to punch out U-Notches and Box-Notches and to open or close the notch boundary. Also, V-notches can be more accurately placed with the help of snap-points.

22. Laser Material Name Selection

More easily select a Laser Material Name by pressing the List button in the Run Time Estimate window.

23. Auto Split Setting and Straight Edge Common Cutting Saved in Material File

Auto Split and Straight Common Cutting settings are now saved with the Material File, with values synchronized to the same settings found in the Cut Sequence tab. Configurable Cut on Side and Lead-in Angle options have been added to Notch Split Cutting.

24. Box Group Editing for Standard Patterns

Box Group Edit allows the user to box or fence select a group of similar patterns, so they can be edited together.

25. Fit Sheet to Parts

In the Sheet tab, this option allows the user to adjust the size of a sheet to fit the parts nested on the sheet.

26. ACIES MJC (Microjoint Cutter)

This option supports microjoint cutting and part unloading for machines that have a microjoint cutter on the unloading arm, including the Amada ACIES TK machine.

27. Hatch Etching

This option on the Sequence Features tab allows the user to create decorative designs and text on a part by etching out specified surface areas in a pattern

28. Part Stacker Module Improvements

Among the Part Stacker improvements are Create Stack Table Layouts with one or more pallets, Part Conveyors are now supported, support for .sch files from Dr.ABE and Cardboard insertion between parts.

29. Load SDDJ Parts into Nesting Module

The option to Load Parts from the SDDJ Server directly into Amada's Job Wizard and Sheet Wizard Nesting Modules has been added.

30. AP100US now supports Amada's VPSS-3i

The Amada CAD/CAM program is now compatible with Amada VPSS-3i. When VPSS-3i is installed, the user may open or save a part in the VPSS Production Designer interface.

POST-RELEASE ENHANCEMENTS – V2014.1.04a

Sheet Wizard

1. When clicking the Next button on the Results screen, the Parts List on the main Sheet Wizard screen will be retained if no parts have failed.

POST-RELEASE ENHANCEMENTS – V2014.1.04

Common Cut

1. Straight common cutting should take into consideration a remnant if the sheet already has a vertical split on it.
2. Sequence must be added to both inner hole and common cut when using manual sequence in common cutting tab.
3. Add a new button named Auto Split Seq to the Common Cutting tab to auto add a sequence to split only.
4. Enhancement for straight common cut to deal with multiple grids in Job Wizard and Sheet Wizard.
5. Change the straight common cut microjoint assignment dialog to allow the user to define microjoint intervals.

Edit Stacking

6. Add a convenient "Delete All Stacking" button in the unloading module, so the user doesn't have to delete a stack part by part.

Input / Output

7. The 64bit version of the program must support loading & saving bmf and iga files.

Job Wizard/Sheet Wizard

8. To assist in making edits, Preference and Machine info icons in Sheet Edit in Job Wizard and Sheet Wizard remain enabled.
9. Add a Customize button to the Open XLS/CSV/TXT dialog to resolve file extension, path and material issues.
10. Enable the program to use part data to populate empty form fields if such data is missing in XLS/CSV/TXT files.
11. Add a “Space Between Common Cut Grid” checkbox to enable a space to be placed between grids during the common cut process.
12. Add “Load Parts from SDDJ” and “Open XLS/CSV/TXT” checkboxes so that the user can pull parts directly from SDDJ and XLS/CSV/TXT files into the nesting module.

Manual Split

13. Improved logic for the Manual Split option in the Common Cutting sub-menu; now splits may be added between parts.

Report

14. A “Tool Comment” option for XLS output in Part Report has been added to Sheet Wizard and Job Wizard.

SDDJ

15. Enable support to output a tapping tool type into the SDDJ server.
16. Add a Management Name field in the Tool Information dialog, which will be sent to the SDDJ server after the NC code has been saved to SDDJ.

Sheet Wizard

17. A “Laser Material Name” pull-down option has been added to the Sheet Wizard and the Thickness field has been merged into the Material Type field.
18. Add an Open XLS/CSV/TXT button to the Sheet Wizard. The function is the same as in Job Wizard; to support loading parts in XLS/CSV/TXT file format.

Unload

19. Add an option to control if need to launch Edit stacking module or not.
20. Auto Unload should be supported even if there isn't a last hit for the unloading machine.
21. To reduce screen clutter, only the part shape and microjoint show when double clicking a part and editing with the Editing arm.
22. The part group should be highlighted when the Edit Arm with unloading machine is in use for that group.

POST-RELEASE ENHANCEMENTS – V2014.1.02

1. Auto Split

Create a checkbox and icon in the CAD/CAM UI for all the parameters in the "AutoSplitHole.ini" file.

2. Cutting Feature

Add another option to control whether the Microjoint should remove the slug destroy or not.

POST-RELEASE ENHANCEMENTS – V2014.1

1. Split Sheet Setting & Straight Edge Common Cut

Improve Split Sheet Settings by adding Between Parts field to control the distance between split cut and part boundary, and Bottom/Left Edge and Top/Right Edge to control Over/Under cut. Included is the Straight Edge Common Cut option, which cuts notches, inner holes and common cuts, before cutting part boundary.

NEW FEATURES v2014

1. Stacking Table Placement Control

This function gives the user precise control over where unloaded parts are placed on the stacking table. For specified Amada machines a separate interface now launches for this operation.

2. 3D Simulation of Part Remover Robot

This new module gives the user an accurate simulation of a fully automated part removal operation.

3. Arm Edit Assignment Zoom-in

When editing TK/PR the user can double-click a part to zoom in, allowing a more precise view of the TK arm in relation to a specific part.

4. Manual Perimeter Notch Relief function

This function allows the user to place additional cuts along the border of a part to free up areas that can "catch" and prevent the automation arm from successfully removing the part from the sheet during unloading.

5. U-V and Common Cutting Available for F1-TK and PSR

For certain Amada automation systems such as F1-TK and the PSR robot part unloading occurs AFTER sheet processing, meaning that Common Cutting and U-V macros can be used.

6. "View SY2" Added to NC Functions Group

The "View SY2" button enables the user to easily see an editable SY2 (Part Remover) code in the Cut Sequence, Punch Sequence and Modules menus. SY2 files (used only with Amada PR and TK machines) are auto-generated when the NC file is made.

7. Independent Arm Movement Support

This feature allows the Unloader Arms to be moved together or independently by using simple mouse clicks.

8. Split Sheet

With this option the user can have the sheet cut into smaller sections in the X/Y directions for easier handling while unloading.

9. Split Hole

Split Hole allows the user to cut internal slugs into smaller sections in the X/Y directions to allow them to fall through the slats of the shuttle table.

10. Import CSV file for PDC & ATC Storage

To support full automation, FabriWINAP100US now allows the user to import a CSV file, which will be synced with the tool list in PDC or ATC Storage - manually placing tools in one of these storage areas is no longer necessary.

11. Auto Fence Tool Assignment

This function allows the user to select shapes and patterns in a closed-boundary area that will be the target for Auto Tool Assignment.

12. Tool Assignment by Layer

Now the user can assign various behaviors/characteristics (such as etching) to CAD elements that exist on a certain layer in a DXF/DWG file.

13. Launch a .SHT file by Double-clicking

Double-clicking a sheet file will open it in the CAD/CAM work area.

14. Part Search by Tool

The user is able to search through the Parts folder for parts that use a specific tool (standard or Special).

15. Auto-Save / Auto-Recover

The CAD/CAM program can Auto-save at intervals set by the user. If the system should fail by default the last Auto-save folder is used to Auto-recover files.

16. Restore Packed Files

Zip files auto-saved to the SupportFiles folder in the CAD/CAM installed folder can be accessed by the user to restore a project, or these files can be shared with other programmers.

17. Create & Save Reusable Part Groups and Kits with Part Grouping

The Group Part options allow the user to create & save editable part groups and kits that can be easily placed into sheets for later use.

18. Part-by-Part Common Cut with Microjoint Placement

The system can be set to cut internal patterns and common cuts at the same time. Also, microjoints can be added to common cut paths.

19. Independent Nesting Clearance Support for Two Axes

Improved nesting logic control for horizontal and vertical distances between parts and sheet split function in Sheet Wizard.

20. Independent Tool Removal for Cut and Punch

Controlled removal of cut and punch tools on combo machines is improved – both can be removed together or separately.

21. Intelligent Synchronization of Cut Start Point and Microjoint

The cutting Start Point and Microjoint location can now be synchronized, resulting in a cleaner edge and fewer redundant start points.

22. Flash Cut Support

Flash cutting functions have been added for Amada Fiber cutting machines such as the FOL-AJ, FLC-AJ and LCG-AJ. (This driver-dependent option is enabled/disabled in the Material Files>CNC Code panel.)

23. Improved integration with FabriSIM for Amada machines

FabriSIM synchronizes machine and material to FabriWINAP100US. See FabriSIM documentation in the CAD/CAM installed folder for info.

24. Notch Cut Out option in the Cut Sequence Menu

This option allows the user to easily add an extra cut to a cut sequence, in order to cut out a perimeter notch that may hinder the part remover.

25. Disable Check Thickness for Single Hit

When this box is checked ON, the program will NOT check the thickness of the sheet or compare it with the dimension of the tool when auto tooling.

FIXED ISSUES - v2018.1.0

Cut Feature

1. AP100 may not allow the user to add microjoints to certain common cutting paths.

Cut Sequence

2. The sequence is incorrect when adding a new slug destroy sequence.

Display

3. The application hangs up on startup when the viewing speed is set to 0.

Edit

4. A warning dialog should display after the first installation when "Change All Similar Patterns" is set to Yes.

Fast Cut

5. An open path can't be sequenced when Etch Boundary in Hatch Settings is checked OFF.

6. If any Fast Cut checkboxes are switched ON, it will add Fast Cut sequence automatically to the grid patterns even if users don't want that.

7. When a circle pattern grid is selected using Fast Cut Define, the grid will be exploded.

8. The Fast Cut E code (cutting condition) keeps the default value, regardless of user input.

9. The system will not finish cutting when the Fast Cut turning arc radius is very small.

Generate NC View

10. AP100 deletes a saved NC File when the sheet is reloaded and NC View is re-generated.

Hatch

11. Hatch settings are incorrect when selecting an inner hole with Etch Boundary checked OFF.

Input / Output

12. AP100US cannot save an Excel file when running Win10 with Office 2010.

Job Wizard

13. In the Job Wizard parts that failed to nest are dropped from the Schedule window.

14. When saving xls, csv and txt files the system does not retain rotation, rotate specific angle or grain direction settings.

Launch AP100US

15. An error message displays when launching AP100US in a Windows 10 OS.

Material Library

16. The Material Library window position and size are not remembered after closing and re-opening.

17. No option exists to rename the Material Type in the Material Library.

Open DXF/DWG Files

18. When the Check Layers option is checked ON, the Choose Layer dialog pops up every time a dxf/dwg file is opened.

Preferences

19. Remove the Smooth Bur and Close Small Gaps in the Preferences>Default Values>Import Options dialog.

Sheet Clipboard

20. When right-click pasting from the Clipboard, Snap On becomes enabled.

Sheet Wizard

21. The "Utilization Ratio" checkbox doesn't function in the Sheet Wizard.

22. Certain multiple-boundary dxf parts cannot be nested in the Sheet Wizard.

23. The Sheet Wizard incorrectly displays a warning that the "Part boundary is not closed" and will not nest the part. In fact, the part boundary is closed.

24. Some sheets will only have one part on them.

25. AP100US crashes when opening the File Open window in Sheet Wizard.

26. When generating NC code, the Sheet Run Time in the XLS report is not being updated after the user manually updates the sheet.

Slug Destroy

27. Slug destroy doesn't take effect after processing the part/sheet using options in the Cut Sequence tab. The user must enable the option in the Material Settings panel.

28. When Slug Destroy is enabled, the sequence on multiple parts with large internal cutouts will cut across the part to the 0, 0 point.

Straight Common Cut

29. AP100US always cuts counterclockwise when the selected Start Corner is from "Top Right."

Tool Inventory

30. Tool info driver converter - With certain drivers conditions are duplicated in the tool condition mapping table.

FIXED ISSUES - v2016.1.4

CAD

1. Distance and Radius values for the TrapeSlot shape in the Shape Library are reversed.
2. Line Properties are causing the line direction to change when tabbing thru the Pattern Properties options.
3. The original lead in doesn't move with pattern after rotation.
4. Pattern labels for TrapeSlot1 in the Shape Library are being placed incorrectly.

Cut Sequence

5. A Split Cut in the Y cannot be added to a notch on the lower left corner of a part.
6. When dragging an icon to the Quick Access Toolbar, the icon should still remain in place on the Ribbon.
7. The system should omit the sequence from the perimeter, if TK or Common Cut is processed while in Sheet View.
8. Slug destroy is being cut after Fast Cut on certain RO shapes.

Etch / Scribe Text

9. The etch/scribe text is not immediately refreshed when using the shortcut key to activate.

NC Generation

10. Start Subroutines and a G98 is not output when special tools are on the inside track.
11. The NC Setup is not getting passed on to the Pre-Punch tool info in the NC code.

Open & OLE

12. Multiple SolidWorks parts cannot be opened in the Sheet Wizard.

Preferences

13. Sheet Properties is not updating the thickness value when pop-ups are switched OFF.
14. When zooming in on a sequenced sheet, the sequence color (light green by default) disappears.

Report

15. The pre-punch tool should be output in the sheet report.

Sequence Feature

16. The line side should always be 0 (CUT ON) and the cutting condition should always be E10 (etching).
17. The center rectangle lead-in will not change location after running Start Point Optimization.

FIXED ISSUES - v2016.1.3

CNC

1. A laser cut condition based on JK... data should not have to be registered to load that data into the NC Page.
2. Split Sheet isn't passing the correct edge data when using the correct driver.

Cutting Sequence

3. The program should not put an additional line cut on an arc on the part perimeter after using optimization.
4. Small notches that are processed for Straight Edge cutting are being dropped from the sequence on certain segments.
5. Smaller parts nested within a cutout should be sequenced before large cutouts.

Fast Cut

6. The Fast Cut cutting condition flag is not being passed to the driver when fast cutting.
7. The Fast Cut process sequence is incorrect if a part is rotated in sheet view.

NC Generation

8. When two parts are grouped and then gridded, certain lines of NC code are not grouped correctly.

OLE

9. The program cannot OLE successfully when an assembly file is opened first.

Pack-Up and Restore

10. Not all tools are restored when restoring a packed up file.

Runtime

11. Time adjustment doesn't show the correct time in the Status bar.

Stacking

12. Manual stacking results in the CAD/CAM program and the Stack Editor are inconsistent when rotating parts.

Tool Inventory

13. The PDC/ATC should support selection of the proper Die Clearance based on the percentage of the material thickness.
14. The driver name and punch condition in tool inventory can't be imported and exported correctly.
15. A CSV file can't be imported into ATC storage accurately.

Unload

16. In PRII the Punch X offset arm location is ignored when editing the arm.

FIXED ISSUES - v2016.1.2

Cutting Sequence

1. Start Point Optimization should take into consideration Cut Avoid On settings.
2. When a sheet is sequenced, Split Sheet cuts run directly through “arc-type” parts.

Draw / Edit

3. The Box Notch option is not placing notch base points correctly.

Job Wizard

4. Nesting fails in the Job Wizard when the part's size in Y is nearly equal to sheet size.

Punching Condition

5. The Punching Condition should be updated when the current tool is replaced with a special tool.

Preferences

6. The win.ini time stamp Date Modified data changes every time the CAD/CAM program is closed.
7. The View Speed will jump to 0 if a hot key is defined for Edit and the cursor is pulled out of the work area.

SDDJ

8. The Y field should be set to 0.00 for a Tapping tool in the UTL file.
9. The material name in the SDDJ Machine Manager should use the Laser Material Name from the CAD/CAM program.

Sheet Wizard

10. Nesting in holes on other parts is not processed correctly when using Straight Edge Common Cutting.

FIXED ISSUES - v2016.1.1

Preferences

1. The default value for a manually added common cut microjoint should be pulled from the microjoint setting dialog. If no value is available, then it will be pulled from the Preferences>Cutting panel.
2. Remove the Smooth Bur (Open File) and Close Small Gaps (Open File) options from the Preferences>Import Options dialog.

Sequence Features

3. Add support for adding a straight common cutting microjoint to a straight common cutting edge in a notch area.

Sheet Operations

4. The program crashes when auto gridding a frame group and then processing the sheet.

Sheet Wizard

5. The Schedules for more than one sheet of NC and SY2 data will not save to the SDDJ.
6. Before saving a schedule to SDDJ, a message should display to remind the user if the sheet has not been sequenced.

Tool Assignment

7. A Box/Frame fence should be assigned to the default cutting tool in a combo machine.
8. Right-clicking should display snap points when defining a special tool.

Unloading

9. The program does not allow a part selected in a frame to be manually unloaded.

FIXED ISSUES - v2016.01**Cutting Feature**

1. An undercut will be added to all other corners when corner features are added.

Edit Material

2. When bringing a JKMX file into CAD/CAM, the default flag for the Laser Material name is reset.

Macro

3. Ordinary tools do not stay with the Macro when using an ATC machine.

Report

4. Sheet utilization is not correct in the XLS file.
5. A customer part appears twice in Sheet report.
6. There is no tool list in the PDF report and it crashes when printing a setup sheet.
7. Tool hit numbers are incorrect when using Reposition under shearing.

Save NC

8. The NC name must be remembered when switching to another folder when saving NC.

Straight Common Cut

9. Add a lead out for a notch when using straight common cut.

Sequence

10. The highlighted tool sequence order is not the same as the line of code in the NC viewer.

Tool Assignment

11. An issue exists when assigning RE tools to patterns using the short end of a 90 degree tool.
12. Microjoint Tool assignment doesn't work correctly in an ATC/PDC machine.

Unload

13. There should not be a prompt every time when adding a final cut for each instance and clearing all final cuts.
14. The NC code does not match the view sequence.
15. GAP_CUPS_FROM_BOUNDARY should work when re-editing arm location.

FIXED ISSUES - v2014.1.04b

NC Code

1. The corner cut condition node is incorrect in the NC code file.
2. The tool display is fine, but the C angle is always zero degrees when using the ACIES machine with ATC.

Ribbon UI

3. The IJP/MJC icon does not show in the Ribbon UI menu.

SDDJ

4. Only the X size should show for the tapping tool in the UTL file.
5. Management Name should not be passed for tapping tools when saving to SDDJ.

Sheet Wizard/Job Wizard

6. When nesting a part size of 87.500 X 71.000 with a sheet size of 155 X 72, an error message will display.

Tool Assign

7. The pitch display for an ATC/PDC machine is incorrect.
8. The tool angle is incorrect when using a rectangle tool nibble on an arc corner.

FIXED ISSUES - v2014.1.04a

Cutting Sequence

1. The NC code for etch is incorrect when having a straight common cut on the sheet.

Input / Output

2. Dragging a DXF/Part file into the Work Area after drawing a line and then deleting it will cause the CAD/CAM program to crash.

Punch Sequence

3. The common tool features don't pick up the sheet patterns.

Sheet Operation

4. The program crashes when deleting a part from an attached sheet.

Tool Assignment

5. A Tool direction from 2013 is not saved in 2014 or 2016.

FIXED ISSUES - v2014.1.04

CAD

1. When a part is saved with a Customer name and then re-opened, the name defaults to "Unspecified."

Cutting Sequence

2. The program crashes after resetting the sequence and then auto sequencing with the attached sheet.

Common Cut

3. The common cut microjoint result is incorrect when loading a sheet from v2013 into v2014.

Input / Output

4. Auto-Save will cause the path of the part being saved to change to the Local Temp folder.

Job Wizard

- 5. Increase the limit of characters for WO and Router No fields from 8 to 32.
- 6. When selecting the group by machine or Wo_No the Name field always displays "1."
- 7. After clicking the OK to Select button the preferred material column changes to the part number.

Punch Feature

8. Improve the auto tool assignment logic outside the boundary line pattern.

Part Info

9. The wrong part is displayed in the Part information dialog.

Sequence

10. There is no tool preview for pre-punch tool.

Sheet Wizard

- 11. Loading a part into Sheet Wizard nesting causes the lead in to get smaller.
- 12. Checking on the Multiple Sheets report toggle should only generate the summary report.

Tool Assignment

13. The space between SQ tools on an arc cannot be changed.

Turret Info

14. The program crashes after removing the EXT/TAP Height and closing the Turret Info window.

Unloading

- 15. Unable to edit stacking for PSR/F1-TK in SheetWizard and Job Wizard without a sequence.
- 16. Ungrouping a part in a group will not delete that part's stacking info from the stacking table.

FIXED ISSUES - v2014.1.03

CAD

1. The Obround angle appears at an unusual angle when it is rotated beyond 180 degrees.

Cutting Feature

2. Two pierce lines display on a part in the work area when the angle is not 90 degrees.

Flash Cut

3. The round hole flash cut sequence display is incorrect when using "FLASH CUT ON/OFF" in special sequence.

Input / Output

4. When dragging a dxf file into the CAD/CAM program, the prt file should be generated under the Part folder instead of the SAMPLES folder.

Job Wizard

5. When trying to edit the sheet to verify the tooling in the Job Wizard, the CAD/CAM program crashes.
6. Assembly (.asy) files created by another person and saved on the network cannot be opened.
7. In AP100US, 32bit with SDDJ installed, the sequence is always generated even if "Without Sequence and Code Generation" is enabled in Job Wizard.
8. When loading a CVS file into Job Wizard, the Work Order and Router No. saved with the file fail to load.

License Manager

9. Occasionally the license manager will stop, requiring a restart.

NC Code Generation

10. An unnecessary zero reposition is inserted into the G Code when there is no pattern on the sheet section which is out of the machine's travel range.

OLE

11. A bmf file exported from a SolidWorks add-in should maintain its unit measurement type (inch or mm).
12. OLE doesn't function with the latest version of Pro/E.
13. No add-in displays in SheetWorks even if it has been registered.
14. When SheetWorks is closed, Open and OLE will not launch.

Preferences

15. The Disable Check Thickness for Single Hit will not remain checked ON when the program is re-opened.
16. The "Show Tool Hit" option will be unchecked after upgrading the CAD/CAM program from an earlier version to 2014 or 2014.1.

Punch Sequence

17. When enabling Inquire Tool or Add Sequence in sheet view, the program runs slowly.
18. The program crashes when adding a sequence for a special tool hit.
19. A part of the sequence is not added after auto repositioning.

Report, Printed

20. Tool Name and Tool Comment in Tool Inventory should be included when the inventory is printed out.

Straight Common Cut

21. If vertical left boundary patterns are not aligned with each other, the straight common cut for the group fails.

TK/PR

- 22. It's difficult to place a final hit on a horizontal line.
- 23. The program crashes when entering stacking mode with a last hit on the part.
- 24. Nothing is shown in the Stacking Module Part List and Display when the part has an open boundary.
- 25. The program gives alarms when clicking Edit Stacking in Job Wizard instead of in the CAD/CAM program.

Tool Assignment

- 26. "Define Cluster Tool> Use Special Cluster Tool" should also take effect for pattern grids.
- 27. Tool Assignment by Layer improvement allows the user to etch everything in an etch layer, regardless of the line type or color.

FIXED ISSUES - v2014.1.02

Cut Sequence

- 1. A sequence that is added while in Part View should also display when the user switches to Sheet View, and enables Area Cut Sequence.

Hot Key

- 2. The part will be deselected when user hits the "Save As" Hot Key.

Microjoint

- 3. User should be able to setup only one Microjoint on the perimeter.

Nesting

- 4. NC Popup option that is available in Sheet Wizard should also be available in Job Wizard.

OLE

- 5. The OLE shape is reversing after a bend assignment.
- 6. When trying to use AP100USCAD v2013 or v2014 to OLE from SolidWorks v16 the OLE fails; even with the transfcad.dll registered-error the SolidWorks application does not start.
- 7. User must check after install/update/online update, that the add-in dll files are correctly placed and registered.

Punch Sequence

- 8. A Refresh issue exists when deleting a pattern on the sheet; the sequence still shows on the sheet but the pattern has been deleted.

Preferences

- 9. The Parm folder does not focus on the selected folder after changing to another.
- 10. Interface Style was previously saved in the system registry, which caused instability.

Report

11. The sheet run time is not output in the sheet layout report.

Split Sheet

12. The vertical split cut result is not correct when the sheet's right side is out of range.

Tool Assign

13. Cannot assign auto tooling to all patterns.

Tool Info

14. The Number of hits should display when inquiring tool info. for a standard pattern.

Toolbar

15. Odd looking toolbar in BCG version.

Tool Assignment

16. When assigning a Special tool from the inventory based on the angle of the tool, the tool is not detected based on the keyed angle in the station.

17. Cannot auto assign a Special tool to exploded patterns.

Unload

18. A part with a negative Microjoint should be allowed to unload.

19. It's too difficult to focus in on a specific part nested in the Sheet Wizard, when editing the Arm.

20. The Leadin angle changes to 45 degrees when editing the arm.

21. Auto Detect doesn't work correctly in an LCC1 machine.

AP100USCAD

22. Enable the SDDJ material setting in AP100USCAD for bending.

FIXED ISSUES - v2014.1**Cutting Feature**

1. The microjoint priority should be higher than the over-cut when they are on the same side.

Cutting Sequence

2. The subroutine uses a G93 to recall each part after a UV macro; this is impractical when using auto sequence for a grid of parts because it generates excess code.

3. The spacebar/right click does not work well for overlapping parts when adding a sequence.

Job Wizard

4. The sheet will disappear after reversing a job in Job Wizard.

NC Code

5. When the percentage of a condition node is set to "0", then the node condition should execute before piercing.

Punch Sequence

- 6. The Special Tool Sequence is not showing on the Sheet.
- 7. The system crashes when adding a sequence to the pattern on the sheet.

Ribbon

8. Add a switch to allow the customer to disable Auto Switch mode in the Ribbon UI.

Sequence

9. The tool sequence with Subs and Macro on, is randomly dropping the sequence of some tools when decreasing or increasing the Grid amount in X & Y.

Sheet Wizard

- 10. If the pierce location is not set in material, when nesting the included features/leads do not work and the lead-ins interfere with other parts.
- 11. The rotate step angle is incorrect when compared with the setting value in nesting.

Tolerance Setting

12. The Tolerance Setting dialog can't be moved; it's always in the upper right corner.

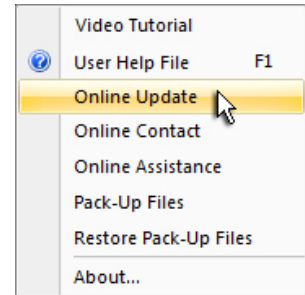
User Interface

13. Click on an internal pattern to place a microjoint and then use the wheel to zoom in, the microjoint marker jumps to the part boundary.

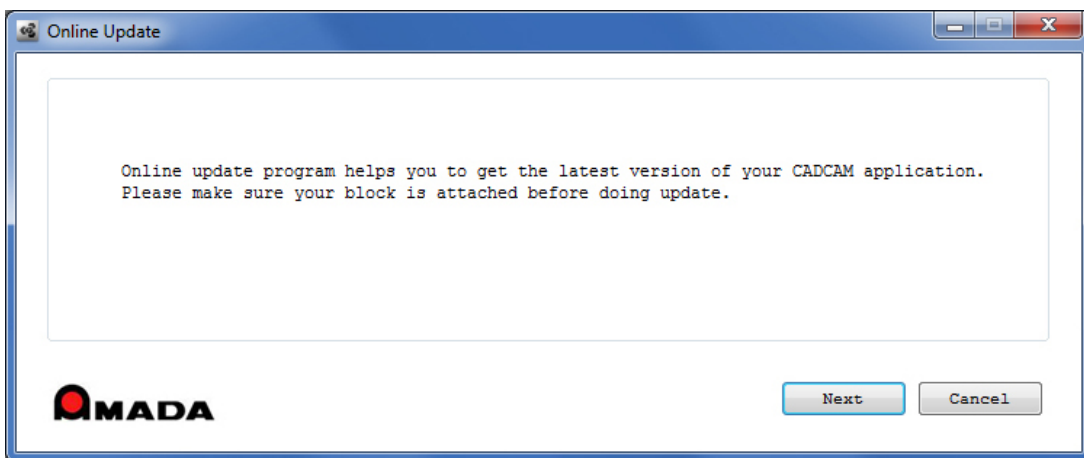
Update Installation via Online Update

If you have access to the Internet, use the Online Update utility to **update** your Amada CAD/CAM program to the latest version. (Update applies to versions from AP100US v8 / FabriWIN v12 to AP100US v2016 / FabriWIN v2016.) Simply select "Online Update" from the AP100US (or FabriWIN) program Help Menu to begin.

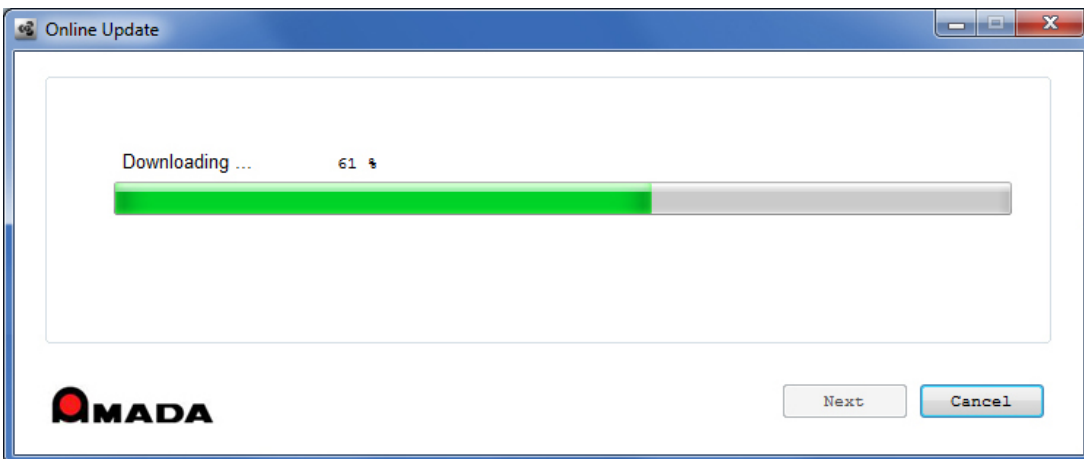
During installation the system will close all Amada CAD/CAM programs. Please back up your files and clear Read-only attributes assigned to AP100US (or FabriWIN) to allow the installer to access these files.



1. Click **Next** in the first Online Update screen to appear.

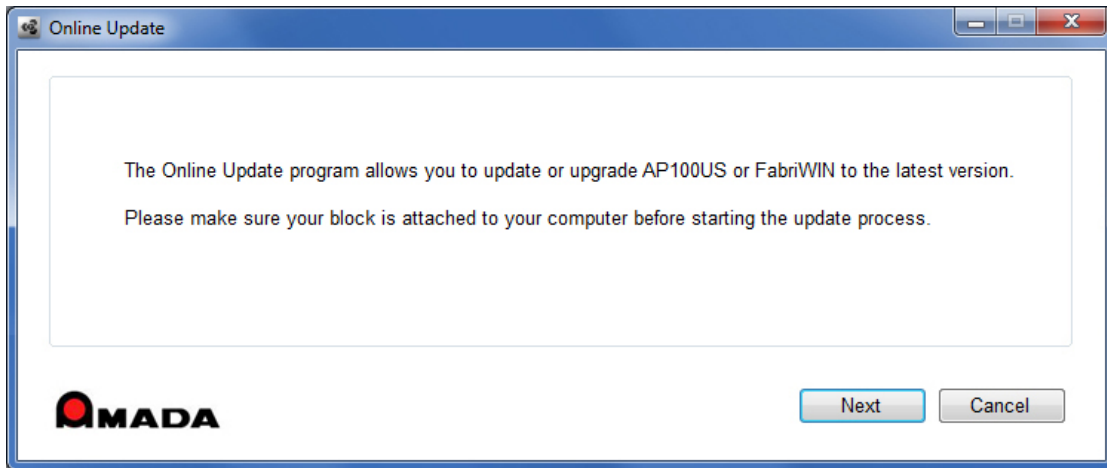


2. Allow the Update to download.

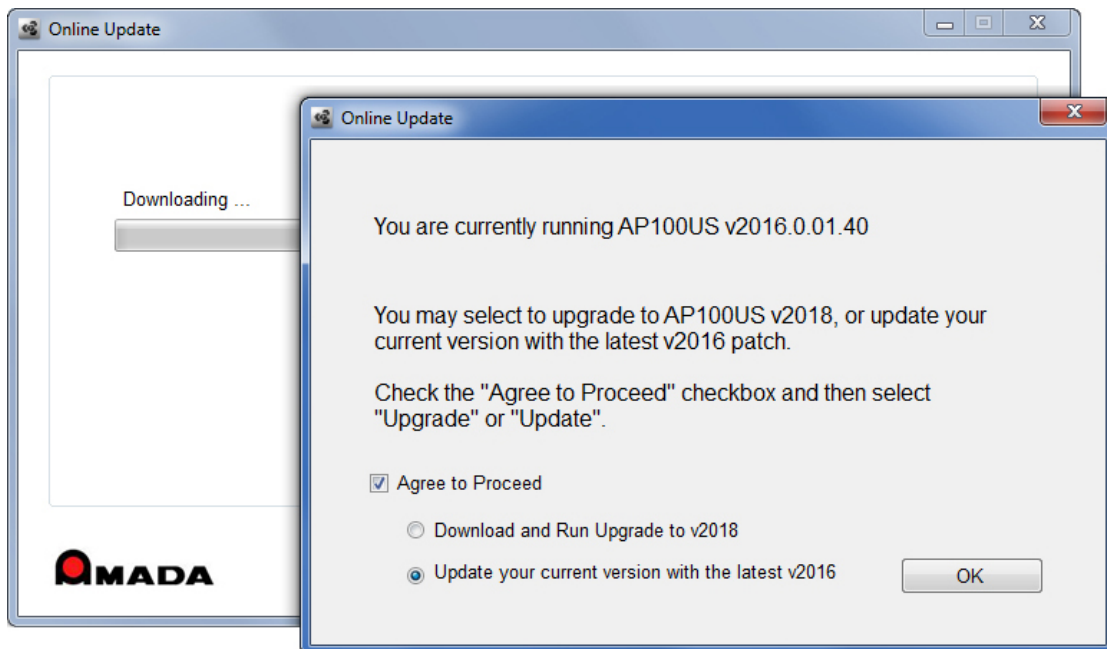


3. The option to **Update** your current version with an AP100US (or FabriWIN) patch, or **Upgrade** to the latest version of AP100US is offered. (This section of the documentation covers **Online Update** only.)

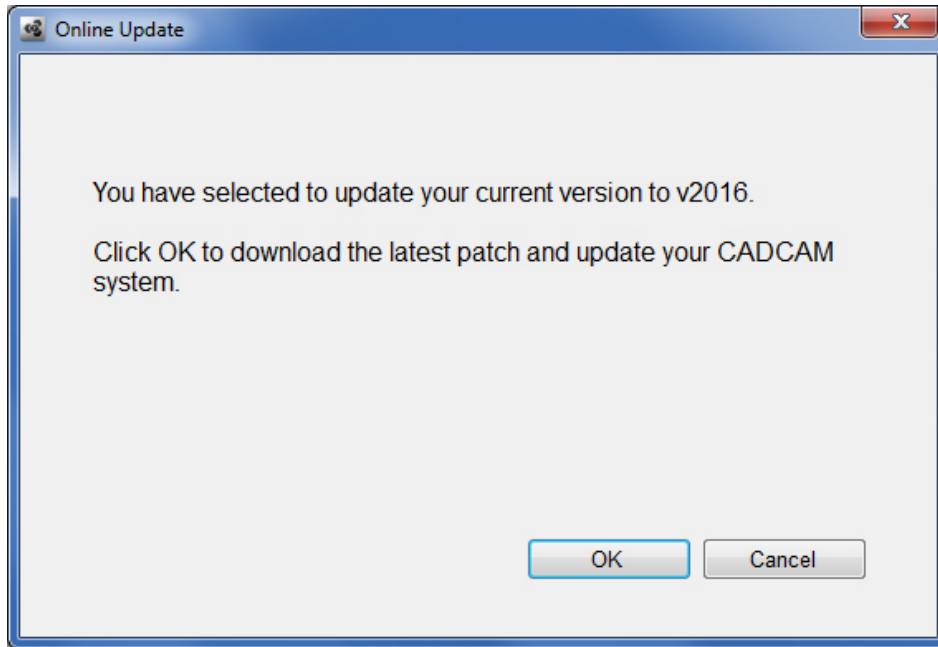
Click **Next** to proceed.



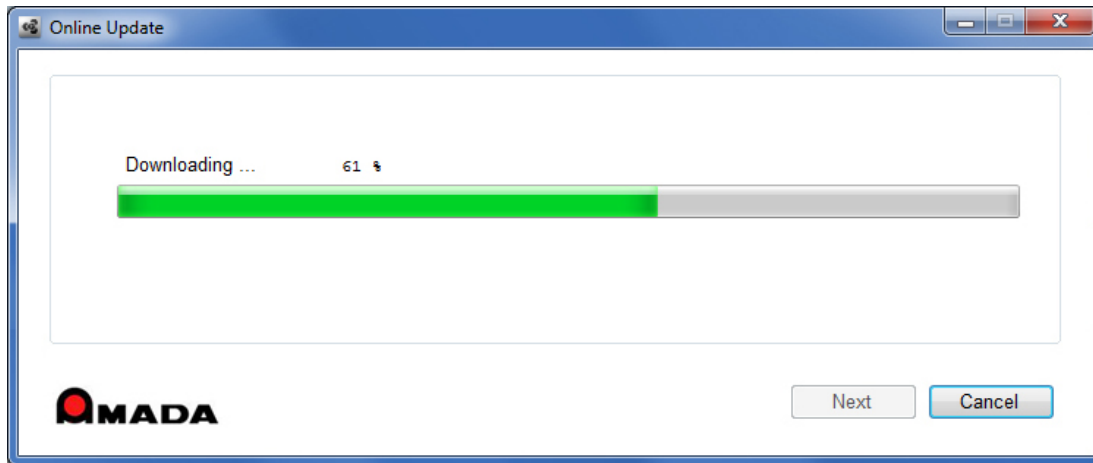
4. The system detects your program version. To update AP100US (or FabriWIN) you must check **ON** the **Agree to Proceed** checkbox and then select **Update your current version**. Click **OK** to proceed.



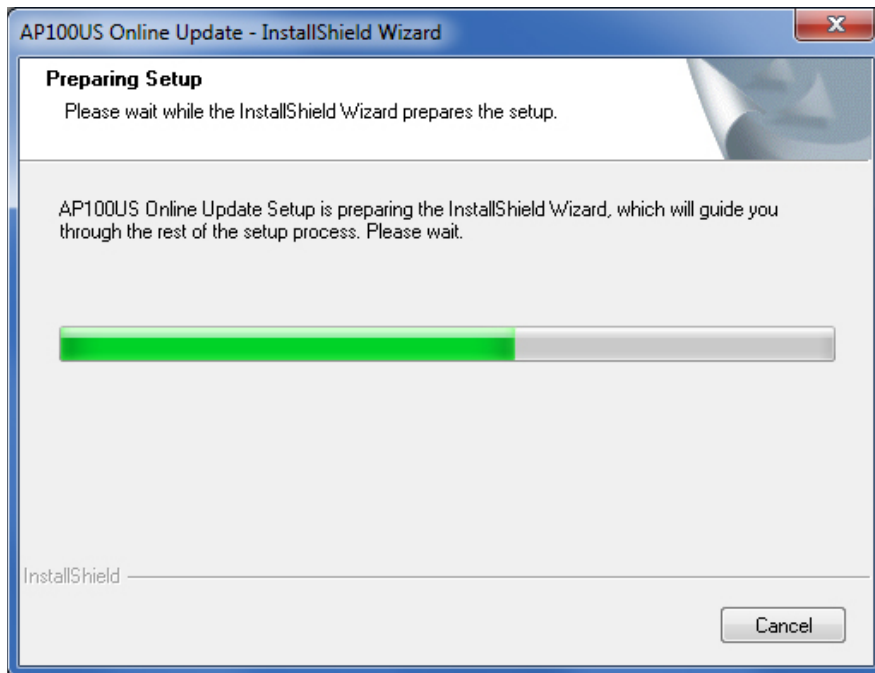
5. The system confirms your decision to update to the latest patch for AP100US (or FabriWIN).
Click **OK** to proceed.



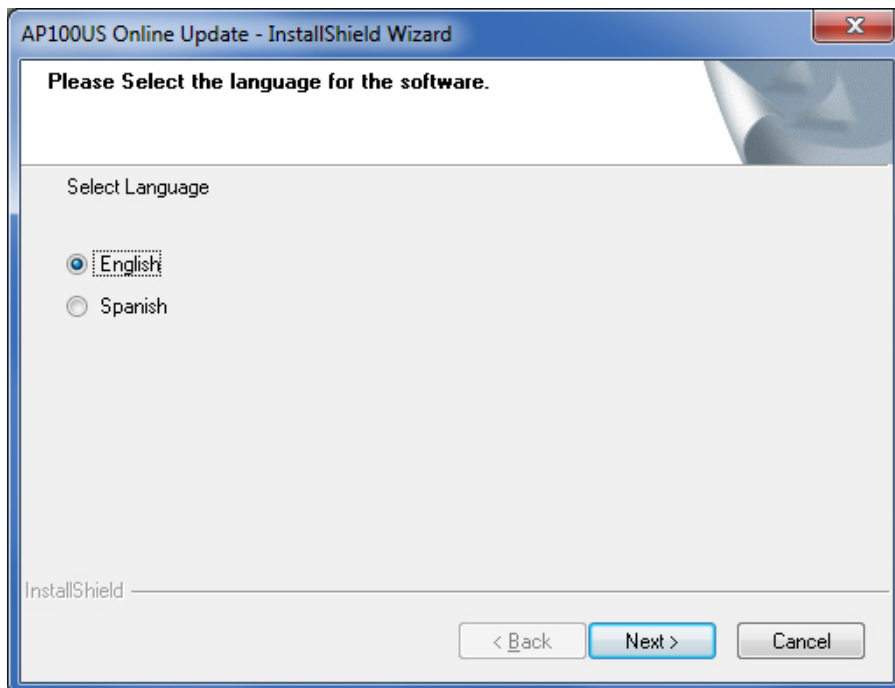
6. Allow the Update to download.



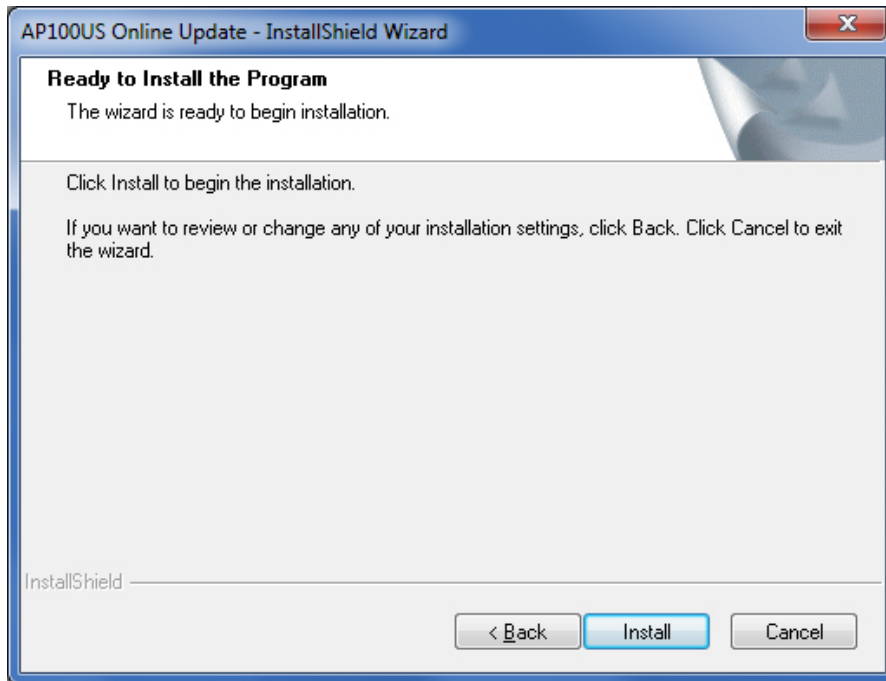
7. Allow the InstallShield Wizard to prepare the setup.



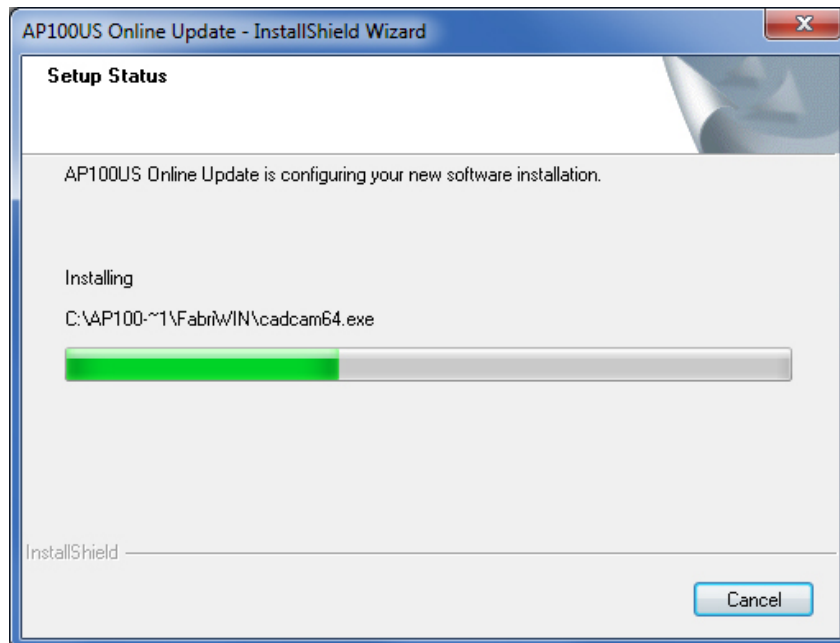
8. Select the language for the update and then click **Next** to proceed.



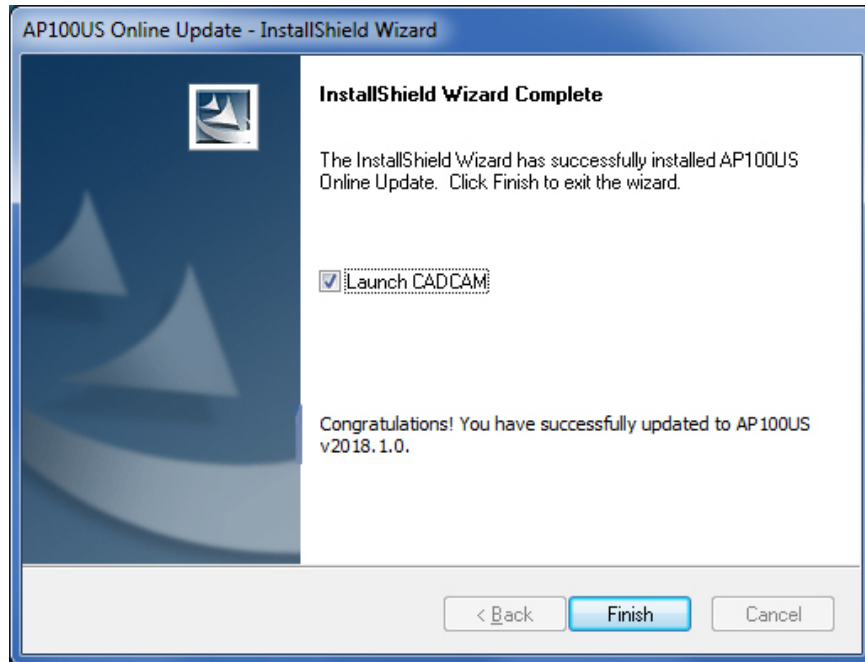
9. Click **Install** to begin installing the update. During update installation your current files (such as “PARTS” and “SHEETS”) will remain intact in the installation folder.



10. Allow the update installation to be completed.



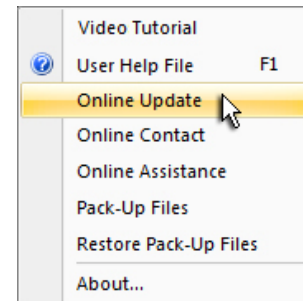
11. When the installation is completed, click **Finish** to close the installer. Check **ON** the **Launch CAD/CAM** button to immediately launch the program.



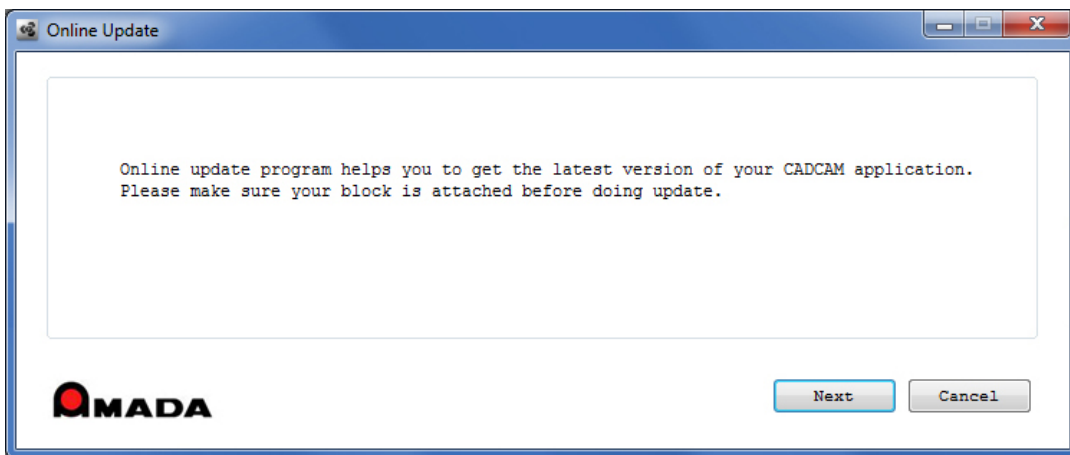
Upgrade Installation via Online Update

If you have access to the Internet, use the Online Update utility to **upgrade** your Amada CAD/CAM program to the latest AP100US version. (Upgrade applies to versions from AP100US v8 / FabriWIN v12 to AP100US v2016 / FabriWIN v2016.) Simply select "Online Update" from the AP100US (or FabriWIN) program Help Menu to begin.

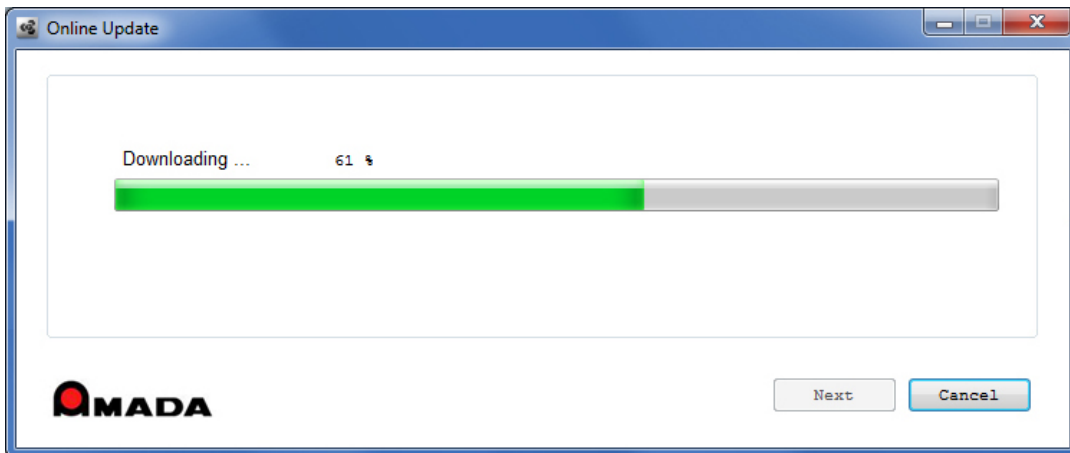
During installation the system will close all Amada CAD/CAM programs. Please back up your files and clear Read-only attributes assigned to AP100US (or FabriWIN) to allow the installer to access these files.



1. Click **Next** in the first Online Update screen to appear.

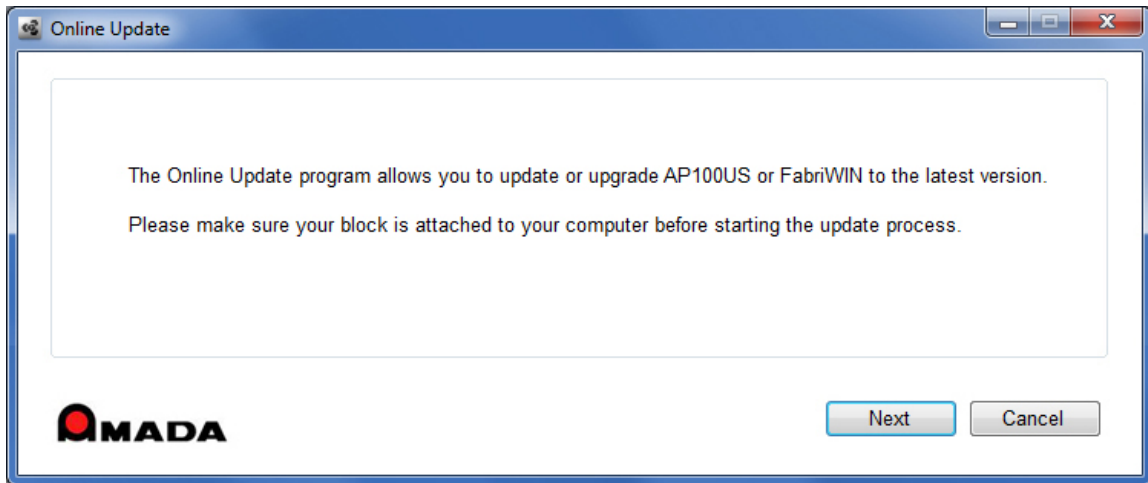


2. Allow the Online Update to download.

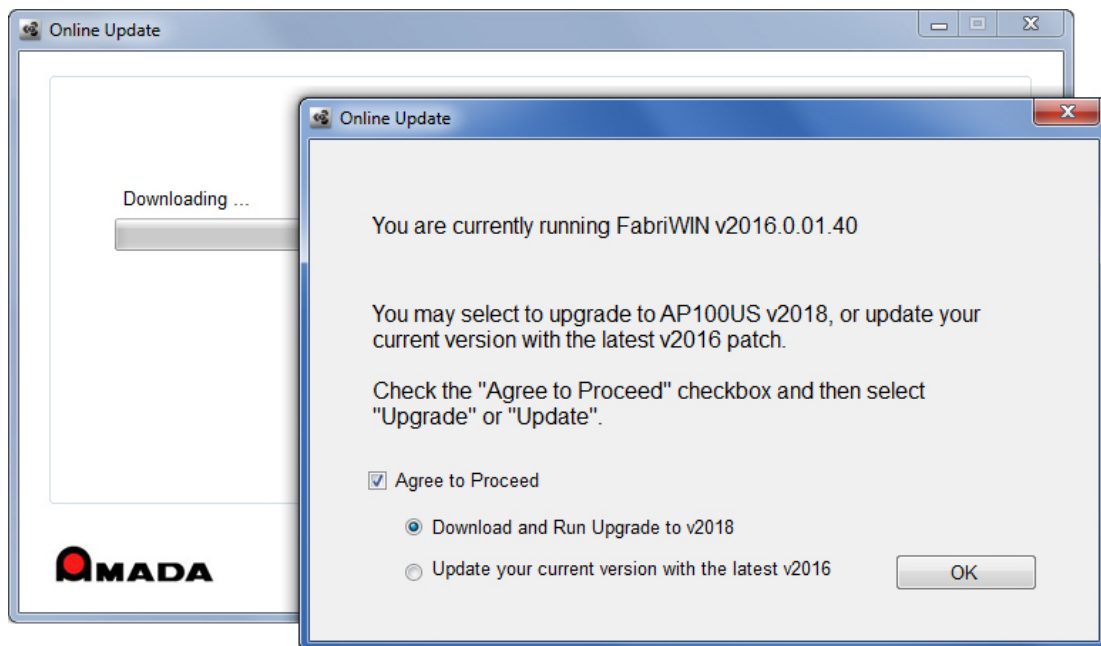


3. The option to **Update** your current version with a patch (for AP100US or FabriWIN), or **Upgrade** to the latest version of AP100US is offered. (This section of the documentation covers **Online Upgrade** only.)

Click **Next** to proceed.

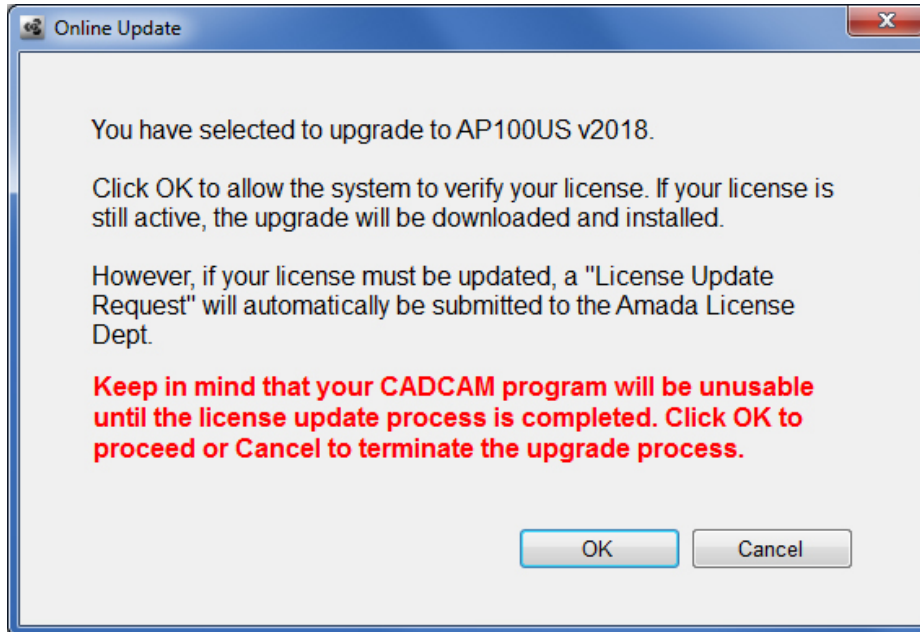


4. The system detects your program version. To upgrade AP100US (or FabriWIN) you must check ON the **Agree to Proceed** checkbox and then select **Download and Run Upgrade**. Click **OK** to proceed.

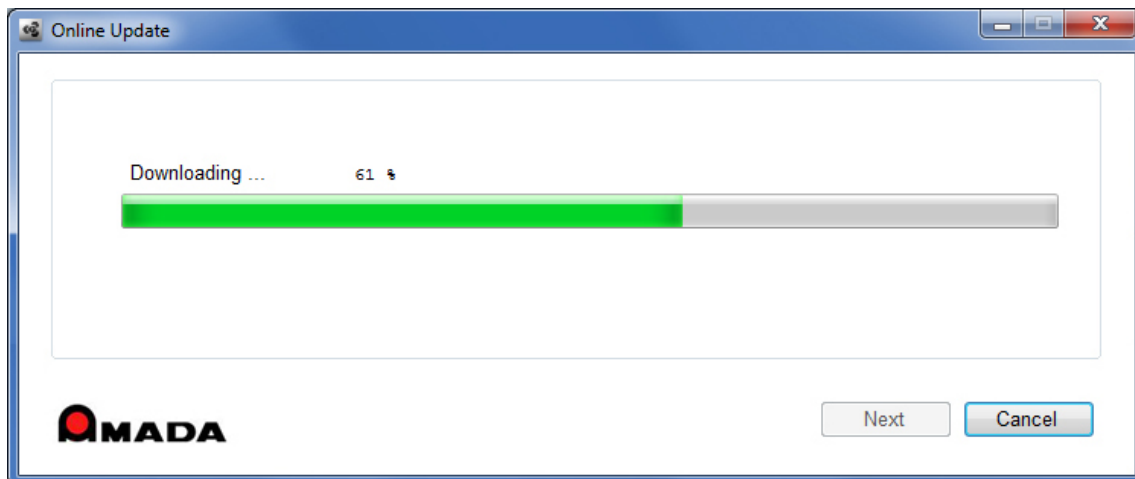


5. To upgrade to AP100US v2018 your user license must still be active. If the license is active, the installation will proceed normally when you click **OK**. When finished AP100US will be ready for use.

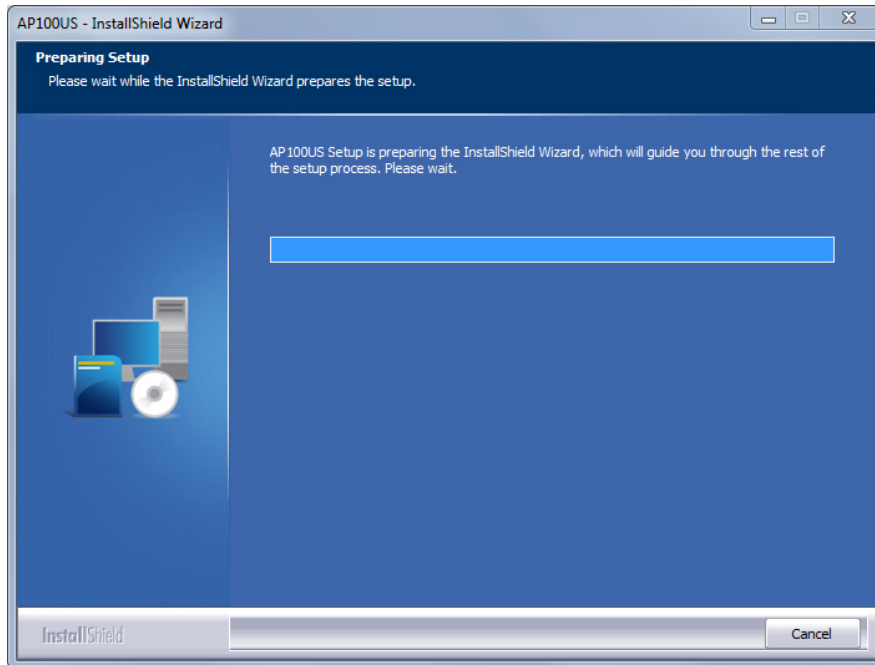
But if the system detects the license is inactive, you may still click **OK** to proceed with the upgrade, but when the installation is finished the system will (1) automatically send a license update request to Amada and (2) lock your CAD/CAM program, rendering it unusable until the license is renewed.



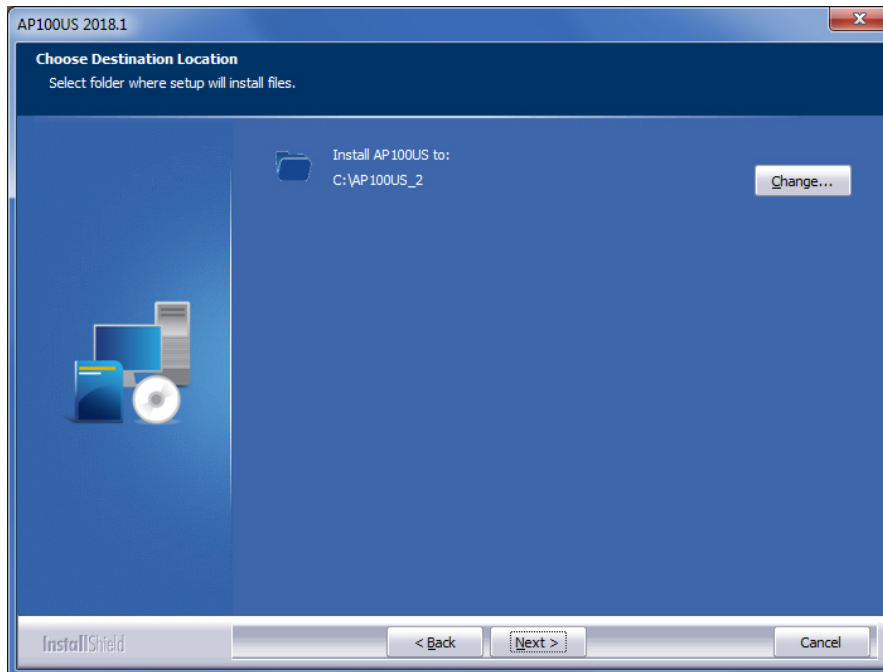
6. After clicking OK the download and installation will proceed. Allow the necessary files to download.



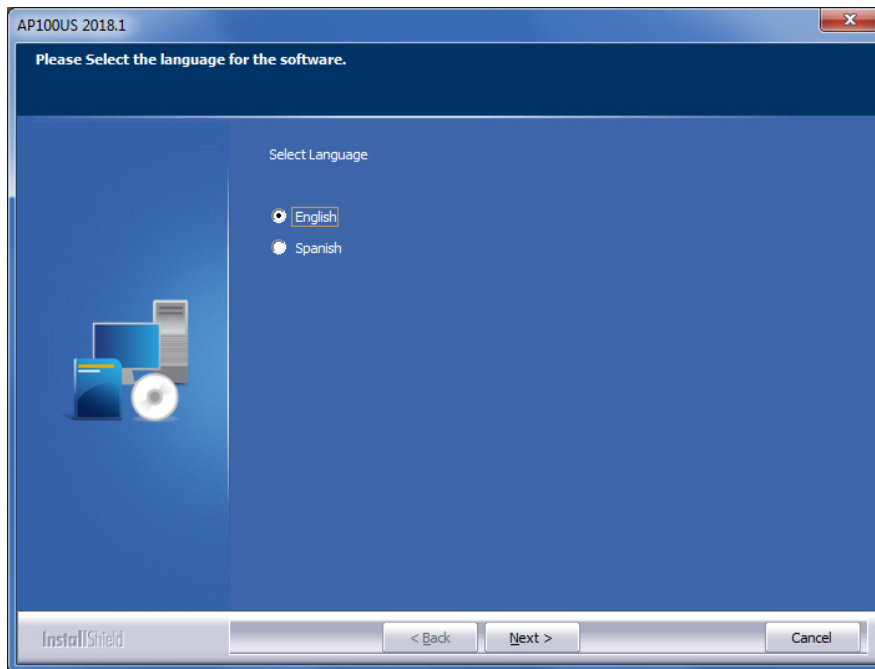
7. The InstallShield Wizard prepares the setup.



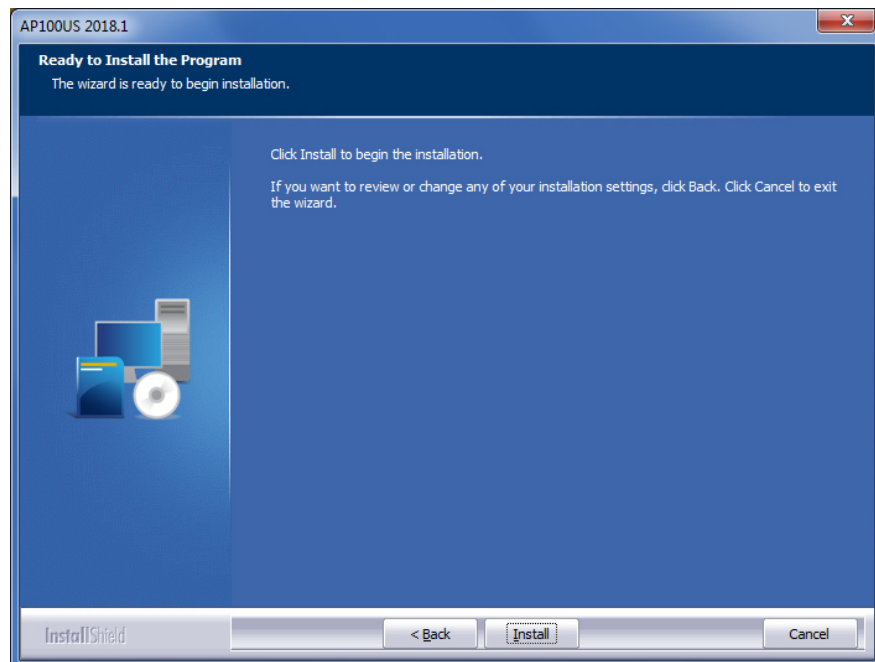
8. By default the system will prepare a folder for installation. Click **Change** to select another folder if desired. Click **Next** when ready to proceed.



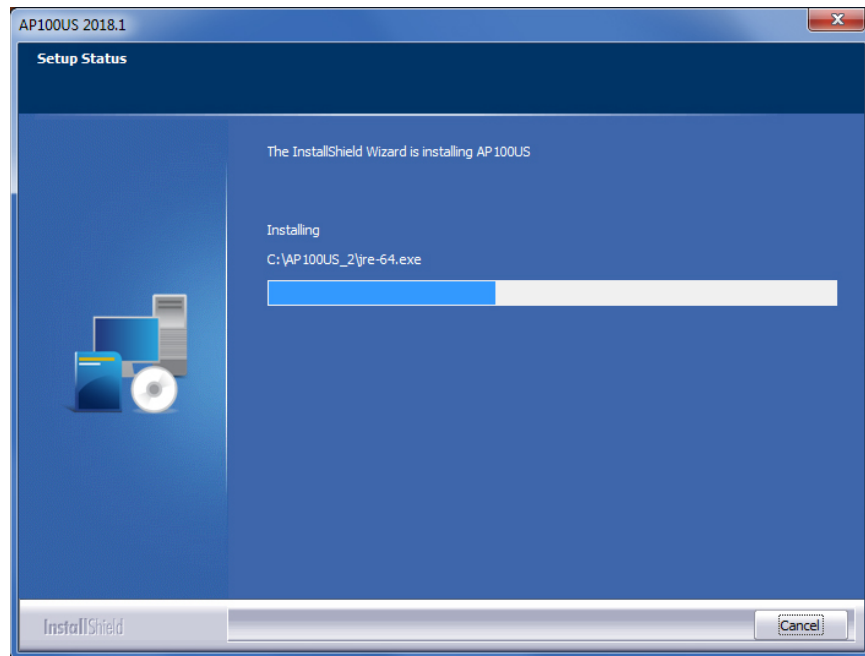
9. Select a language for the installation and then click **Next** to move ahead.



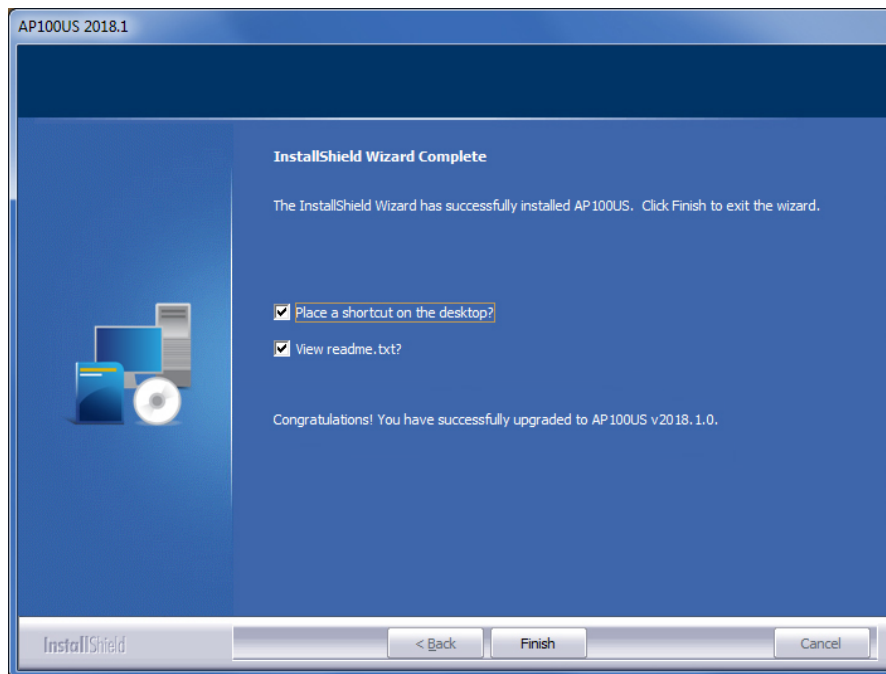
10. Click **Install** to begin the actual installation of the upgrade. During upgrade installation your current files (such as "PARTS" and "SHEETS") will be copied over to the upgrade folder.



11. The system installs the new upgrade program files.



12. When the installation is complete, select to place an icon on the desktop and view the ReadMe file. Click **Finish** to close out the installer and begin using AP100US v2018.



Update Installation via DVD Install

Note: If you select install a new copy of this product, the installation utility will install the update as a separate product in an alternate folder, rather than update the software in the default program folder. For more detailed instruction refer to the CAD/CAM Installation Guide on New and Update Installation Procedures.

To perform an Update Installation:

1. Insert the product installation DVD into the DVD drive. The Existing Installed Instances Detected window appears. The message in the window informs you that Setup has detected the following product(s) on your computer that qualify for the update.
2. Select **Maintain or update the instance of this application selected below** and click **Next** to continue.
Note: If you select **Install a new instance of this application**, the installation utility will install the update as a separate product in an alternate folder, rather than update the software in the default program folder. Click **Next** to continue.
3. The Preparing Setup window appears. Wait until the file backup process is completed.
4. The Sentinel Protection Installer, Confirm Upgrade window appears. Select **Upgrade** to start the InstallShield Wizard. In the following windows accept license terms, select complete setup type, and click **Finish** in the final window.
5. The Welcome window appears. Select **Modify, Repair or Remove** and click **Next**.
6. The Components selection window displays. Select the components to reinstall and click **Next** to continue.
7. In Setup Type select the preferred language and click **Next**.
8. The Parameter Settings dialog displays. Confirm the settings in the dialog and make changes if necessary. Click **Next** to continue.
9. The 3D Directory Settings dialog displays. Confirm the settings in the dialog and make changes if necessary. Click **Next** to continue.
10. The Select Program Folder window appears. Specify a program folder for the installation. Click **Next** to continue.
11. The Start Copying Files window appears. The installation utility begins to copy files to your computer system.
12. After the Copying Files process is completed, the License Setting Window appears. Complete the license configuration in this window. Click **Next** to continue.
13. The Maintenance Complete window appears. Click **Finish** to complete the Update.

Contact Information

Amada America Inc.
7025 Firestone Blvd.
Buena Park, CA 90621
1-800-254-7532, Ap100usSupport@amada.com

For more information about Amada and its line of products, please visit www.amada.com.

*Microsoft Windows Professional, Ultimate, Home Premium, Windows 7, Windows 8 and Windows 10 are registered trademarks of the Microsoft Corporation in the United States and other countries.