

EMK3610NT with AMNC-F Control Layout Drawings



Amada America Inc.
7025 Firestone Blvd.
Buena Park CA. 90621
Phone: (714) 739 2111
Fax.: (714) 739 4099
Email info@amada.com

Warning

- Qualified personnel must complete all work.
- Do not apply power to the EMK 3610 NT until an Amada Service Engineer is present and has instructed you to do so.
- Not all information required to install the EMK 3610 NT is included with this document. Specific details for proper installation are found in the document *EMK 3610 NT with AMNC-F User Pre-installation Guide* available at the Amada America Internet web site at <http://www.amada.com/>.
- Considerable effort has been made to ensure that this manual is free of inaccuracies and omissions. However, as we are constantly improving our product, some of the data contained herein may be out of date. Please check our Internet site, <http://www.amada.com/>, for the latest release of this document.

Contents

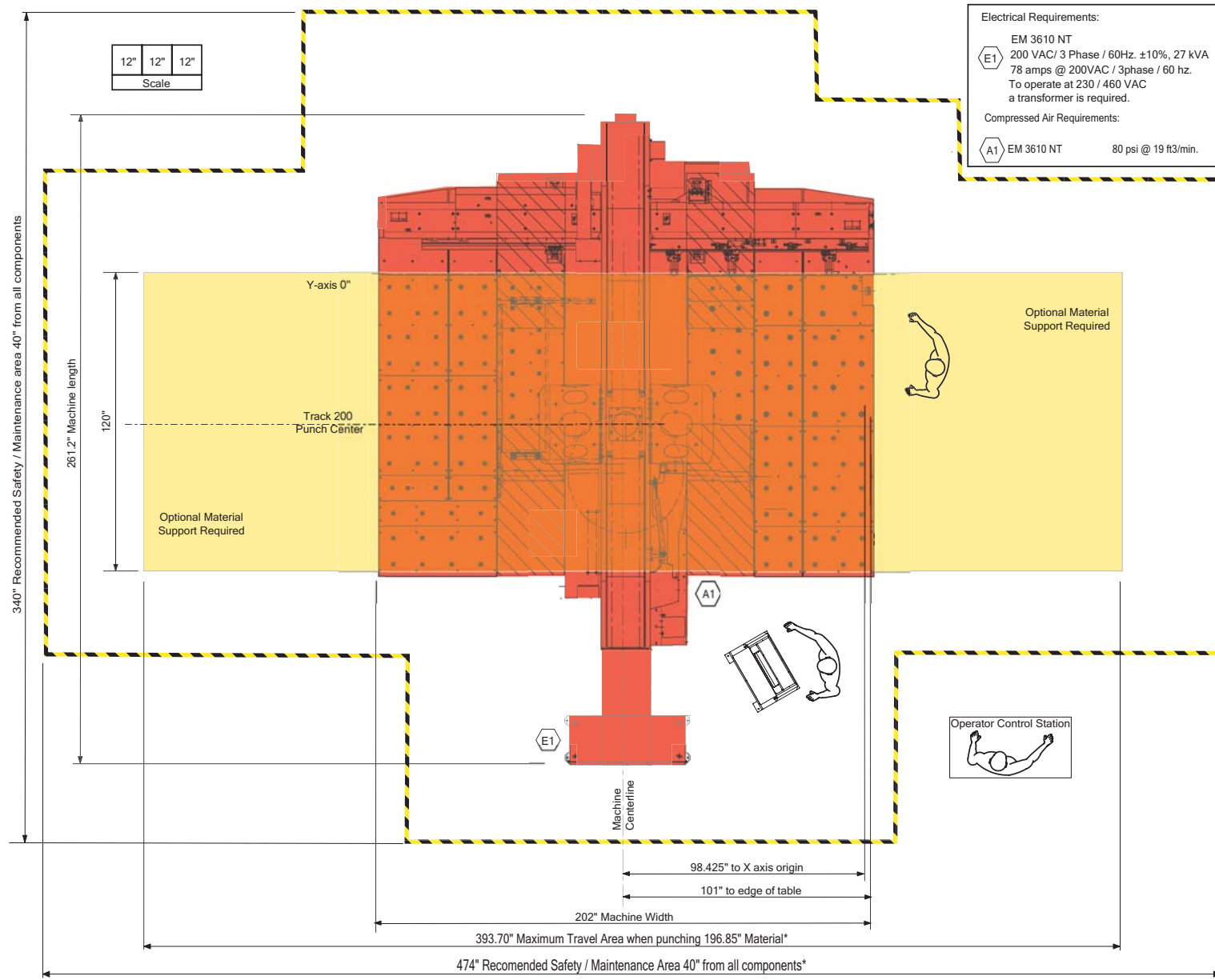
Planning the Location of the EMK 3610 NT 4
Plan View - EMK 3610 NT 5
Detailed Plan View - EMK 3610 NT 6
Elevation View - EMK 3610 NT..... 7
End View - EMK 3610 NT 8

Planning the Location of the EMK 3610 NT

The following diagrams provide the details for positioning the EMK 3610 NT.

- No obstacles are allowed in the worksheet travel area and the ceiling must be at least 40" above the EMK 3610 NT.
- All of the recommended maintenance areas should be used, but at a minimum the doors of the NC unit must be able to be opened. Any reduction of the listed maintenance areas may increase time and expense of installation and maintenance.
- The EMK 3610 NT machine and control must be protected from direct sunlight or other heat sources. Direct exposure to direct heating sources such as infrared heaters have been shown to affect punch and die alignment.

Plan View - EMK 3610 NT

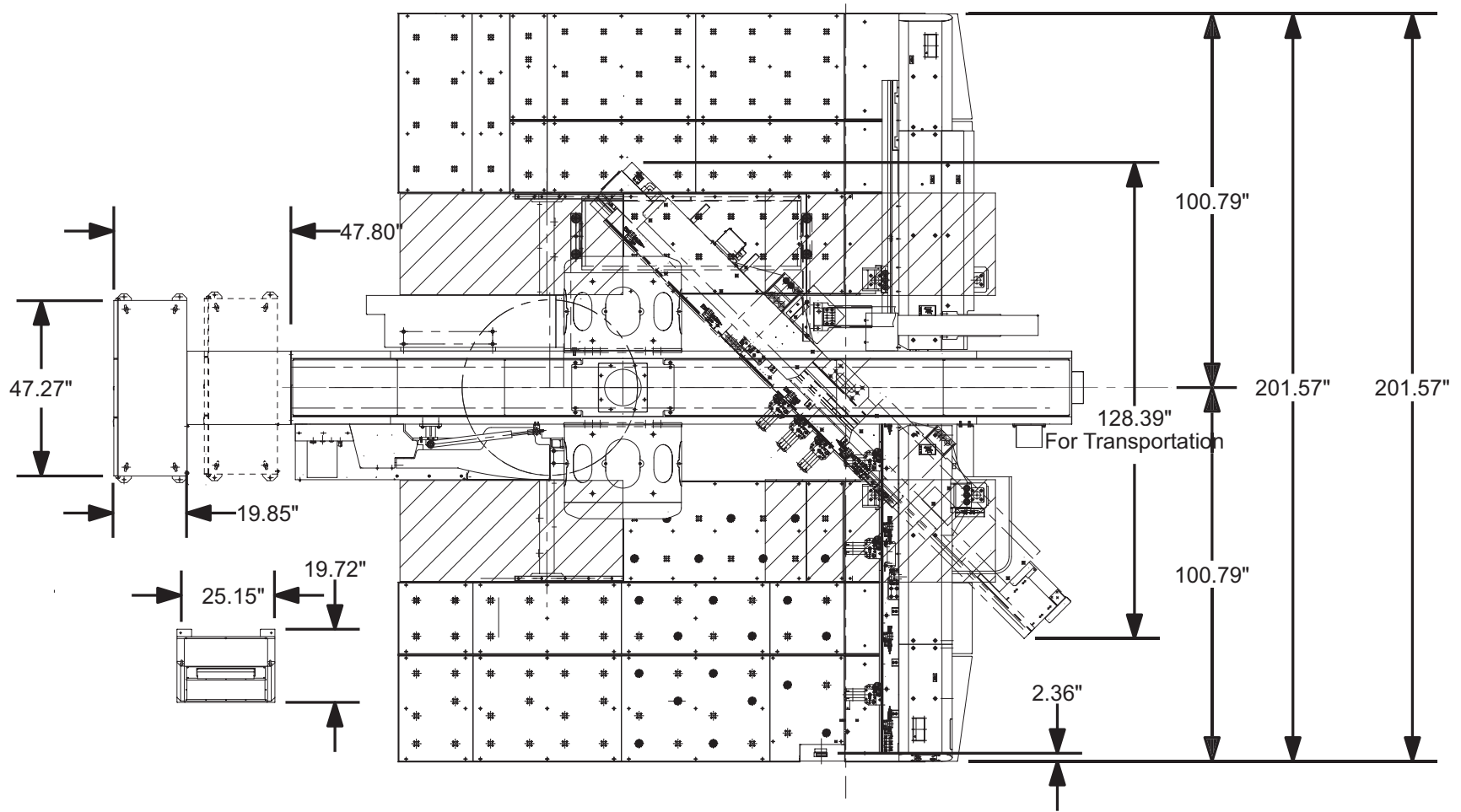


Electrical Requirements:
 EM 3610 NT
 E1 200 VAC / 3 Phase / 60Hz. ±10%, 27 kVA
 78 amps @ 200VAC / 3phase / 60 hz.
 To operate at 230 / 460 VAC
 a transformer is required.

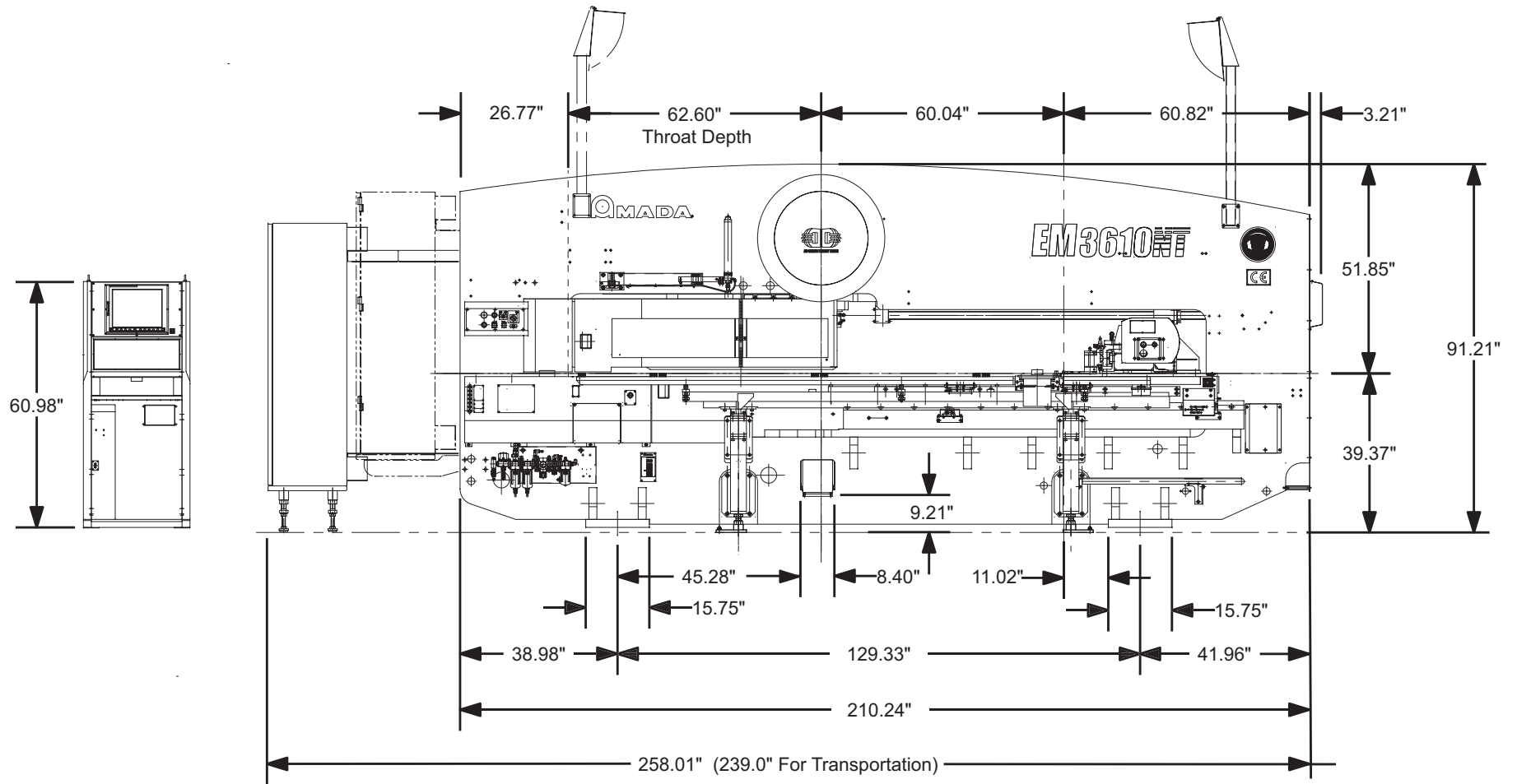
Compressed Air Requirements:
 A1 EM 3610 NT 80 psi @ 19 ft3/min.

* Actual clearance depends on the maximum size of the material that will be punched
 - Always use sub tables to support sheets larger than 100"

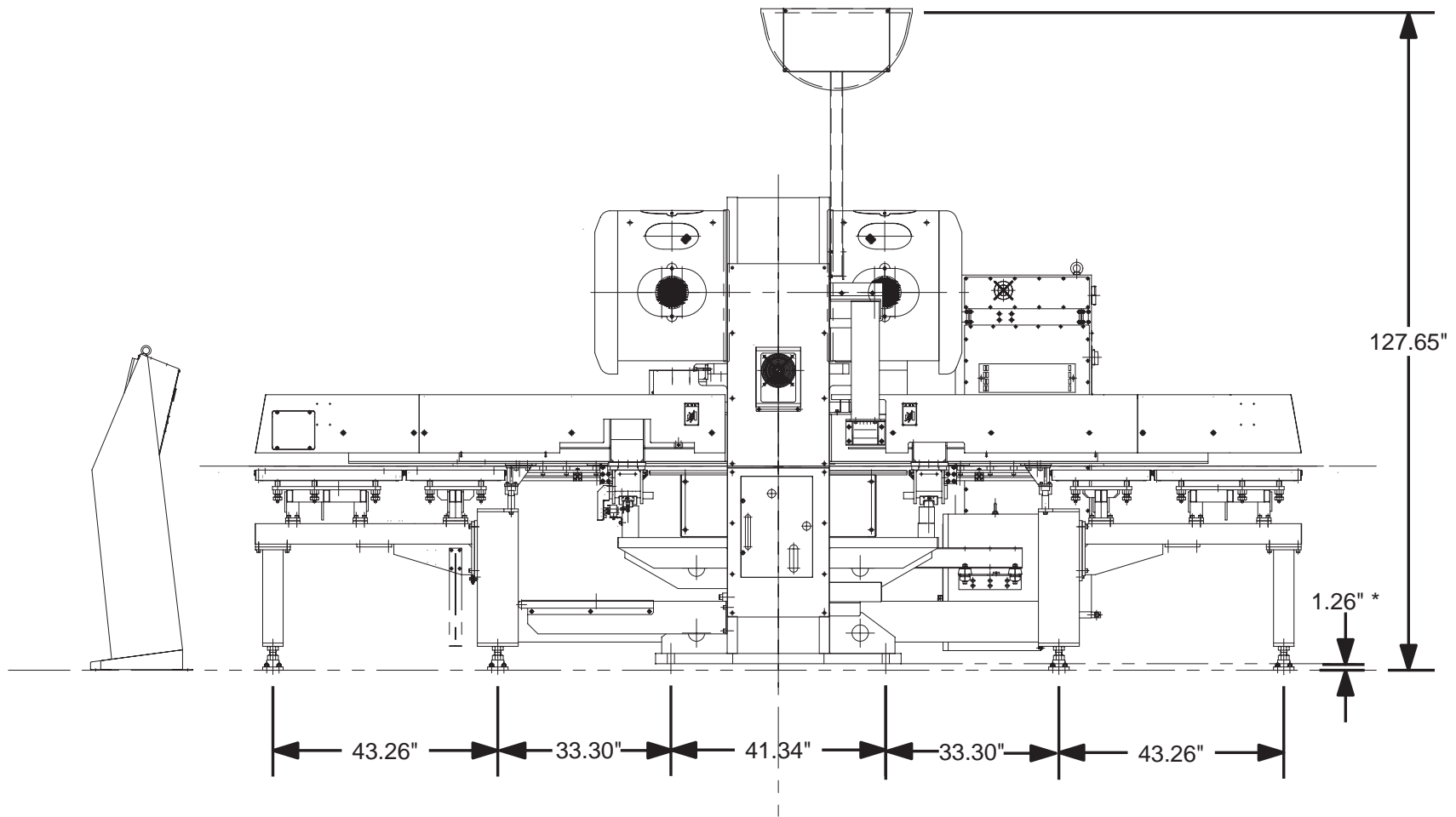
Detailed Plan View - EMK 3610 NT



Elevation View - EMK 3610 NT



End View - EMK 3610 NT



* Varies with shimming and/or mounting techniques