

# T-UP TOOL



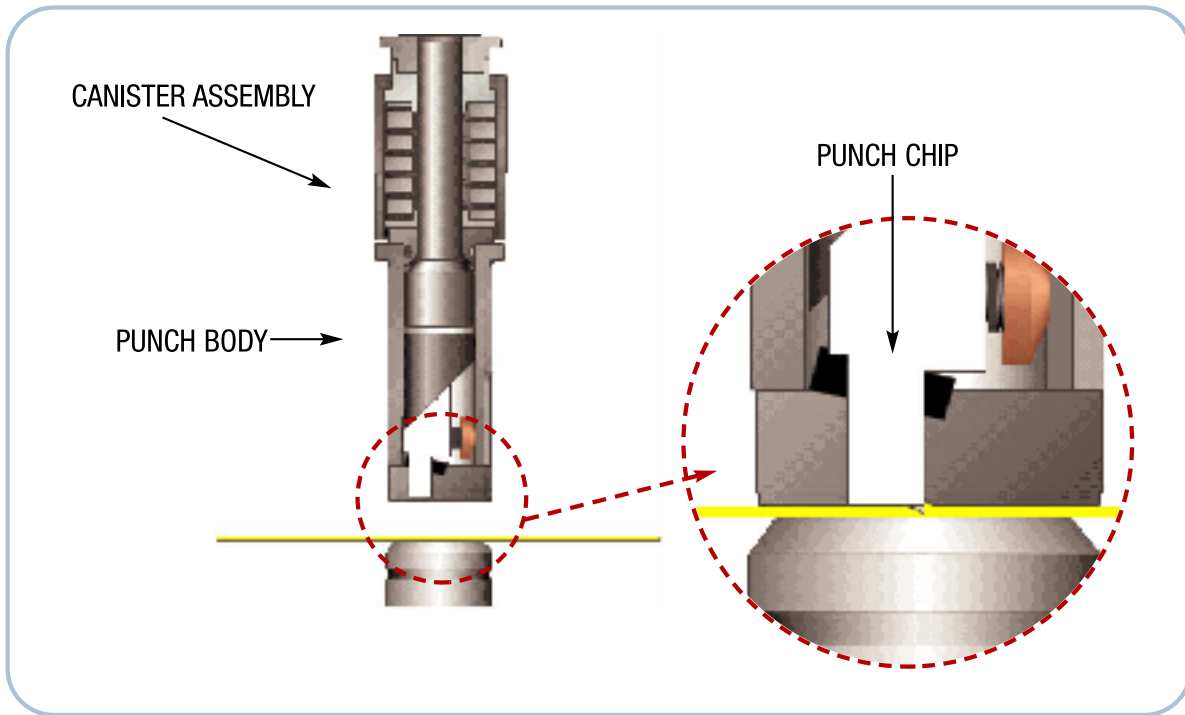
Create locator tabs for spot weld positioning



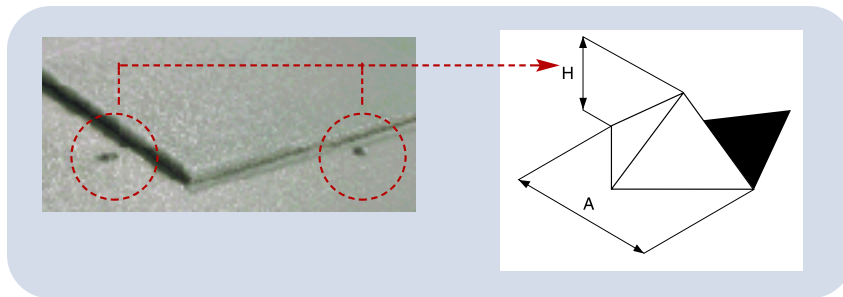
- *For use on thin material where half-shear punching is not possible*
- *Leaves no markings on the underside of the part*
- *Eliminates post process clean-up of the part surface*



## Structure of T-UP Tool



## Specifications



Tool Size		1-1/4" (Thick & Thin)		
Materials	Thickness		H	A
Mild Steel	25 - 22 ga.	.021" - .030"	0.016"	0.059"
(.021" - .120")	21 - 6 ga.	.033" - .120"	0.020"	0.071"
Aluminum	24 ga.	.025"	0.016"	0.067"
(.040" - .125")	19 ga.	.040"	0.020"	0.067"
	18 - 11 ga.	.050" - .125"	0.024"	0.071"

Note: Not for use on stainless steel.



7025 FIRESTONE BLVD • BUENA PARK, CALIFORNIA 90621 • (714) 739-211 • FAX (714) 739-4099 • www.amada.com