

AP100US v2019.3 Update & Release Notes



Thank you for purchasing Amada's AP100US! These release notes outline the new features or changes in the latest version of the software as well as information regarding updating to the current version. These modifications are in response to customer feedback. The AP100US CAD/CAM System is licensed software, and cannot be freely distributed. Please read the license agreement that accompanies the software.

AP100US now supports SDDJ v3.6 and SDDJ v5.1.

Important

Cumulative patches described herein are only for the AP100US version indicated! The patches fix various problems and add the enhancements outlined in this document. This most recent patch for 2019 is NOT intended to upgrade 2018.x or earlier versions. ***You will render earlier software versions inoperable if you attempt to use more recent patches!***

Contents

System Requirements	3
New Enhancements v2019.3	4
New Enhancements v2019.2	5
New Enhancements v2019.1	6
New Features - v2019	6
Fixed Issues v2019.1	8
Fixed Issues v2019.2	9
Fixed Issues v2019.3	10
Update Installation via Online Update	11
Upgrade Installation via Online Update	17

System Requirements

Hardware	Description
CPU	Intel® or AMD® Athlon™ dual-core processor, 2.0 GHz or higher.
Memory	8 GB of RAM (16 GB or more recommended).
Hard Disk	Minimum of 10 GB of free hard disk space.
DVD DRIVE	A DVD drive is required for installation.
Video Display	1,024 x 768 display resolution with true color (1,600 x 1,050 with true color recommended).
Browser	Microsoft® Internet Explorer™ 9.0 or later web browser.
Pointing Device	Serial or USB mouse with wheel button.

Software	Description
Operating System (32 / 64 bit supp.)	Microsoft® Windows™ 7, 8 & 10 Ultimate, Professional, or Home Premium. Note: An internet connection is required to register the software, as AP100US must be registered to run. (See the License Manager Help file.)
Network Installation	For a network installation, the server computer must be running the server versions of Windows 2003, 2008 or 2012.
Supported Software	SolidWorks® 2019, SolidEdge® ST6, AutoCAD® 2019, Autodesk® Inventor 2019, Pro/E® Creo 3. Note: If both SolidWorks and SolidEdge are installed on the same system, an OLE integration conflict may occur.

New Enhancements v2019.3

1. License-CADCAM

AP100US will check license issues and try to resolve them before launching. If an issue can't be resolved, the user must contact Amada Support.

2. License Manager

Because the ServerLicenseManager.exe relies on the LicenseManager.exe, it has been included in the AP100US Server License installer.

Have the License Manager automatically resolve HASPLMS issues on start up to make sure the License Manager is correctly functioning.

In the Tools tab, the user may run a Diagnostics tool to check for license issues. For failed items, click Fix to resolve the problem(s). Click Restart License Service (HASPLMS) to restart the HASPLMS.

Add an Info tab to the License Manager, which will list all license info. Use Copy Info to copy this info to the clipboard, so that it can easily be pasted in an email sent to Amada Support.

Previously in the License Manager, transferring a license required the use of a USB device. Now the user may choose where to store the transfer files.

3. Server License Manager

The Server License Manager now supports: Offline License Activation, License Transfer, Diagnostic Tools, License Info.

New Enhancements v2019.2

1. ATC Setting

Importing UP/DOWN settings of Forming/TP/BR/CP tools from ATC CSV to ATC station tool info is supported.

2. Die Clearance

On ATC machines a UI change will restrict the user from loading more than two dies into the ATC Storage.

3. Fast Cut

Enhance Advanced Fast Cut Settings window to make it easier to understand.

4. License Manager

If both AP100US and AP100US Monitor licenses are activated on the same PC, License Manager shows the Key ID of the Monitor license instead of the PUNCH, LASER, or PUNCHLASERCOMBO license.

5. Material Type

Support adding the same sheet size when the grain direction is different in the Material Type/Thickness>Default Sheet Sizes tab.

6. Reposition

For ACIES machines, use the Max Reposition value as a reposition location.

7. Sheet Wizard

Material Type combo column shows all material types in the Material Library for the current material group. Also, the Thickness column shows all available thicknesses for the current material type.

There is no need to display the "Select Material Type and Thickness" dialog when opening a file if the user checks off the "Enable Part Thickness Checking Popup Dialogs" in Preferences.

The Open file dialog will still remain open after loading parts into the Sheet Wizard. Previously the Open file dialog closed after loading parts.

Nesting will execute only with a skeleton/remnant sheet which has an Available status. It should not nest with a sheet that is already pending (committed).

Support a dropdown list for material type and thickness in Sheet Wizard> Advanced Settings> "Set Default Material File" dialog.

Add a "ShowNestingResult" flag in the Parm>NestWizard.ini file. Only when ShowNestingResult is set to 1 and "Auto-select Optimal Nesting Strategy" in Sheet Wizard>Nesting Strategies is selected, then the Choose Nesting Result dialog will display during nesting in Sheet Wizard.

8. Turret

The current Machine Name now displays as a header in turret and turret illustration windows.

New Enhancements v2019.1

1. License Manager

When upgrading earlier versions of AP100US to AP2019, the old-style perpetual protection block will be set to a 6-month trial version. The system will display a message to inform the user that the old block will not work after 6 months.

The number of days that a license can be checked out (a maximum of 30 days is supported) can be specified in the ServerLicenseManager. A user is not allowed to check out a license for more days than specified.

2. Machine Info

"Output Stack Report" and "Output Stack Layout" have been added to the Sheet Layout Info panel>Output Report section.

3. Part Info

To allow the user to select materials, a Material Thickness pull-down menu has been added to the Part Info>CAM Info panel.

4. Sheet Info

The Laser Material Name has been added to the Sheet Report file.

5. Sheet Wizard

Add a checkbox to allow the user to set the current Format Name as the default, without having it in the CSV.

Double-clicking a part in the Schedule Number cell to edit the number is supported. However, if the scheduled number of parts is changed, it may be necessary to re-nest or possibly remove this part.

"Select" and "Unselect" menu items have been added to the Sheet Wizard, Load Part panel. Right-click a line item in the Parts List to display the flyout menu.

New Features - v2019

1. Sheet Wizard - Schedule List & Commit

Use the Schedule List to monitor material usage and job status for jobs that are processed by machines on the factory floor. Information given in the List allows skeleton usage to be managed. Finally, click the Commit button to push a fully prepared job to the Schedule List.

2. Sheet Wizard - Edit Layout

In Edit Layout the user may select and make changes to a job nested in the Sheet Wizard. Current sheets may be deleted, existing sheets may be inserted or entirely new sheets added.

3. Sheet Wizard - Advanced Settings

Options in the Advanced Settings panel give the user fast control over Nesting Strategies, Default Settings for added parts, Interface Arrangement and others.

4. Sheet Wizard - Nesting Multiple Materials

Parts in the Parts List for Nesting with the same material type will be nested to one job, but a part with a different material assigned to it will be nested to a different job.

5. Sheet Wizard - Improved Nesting Logic and Processing Speeds

Improvements in the Sheet Wizard data structure coupled with the new Nesting Strategies options have resulted in faster sheet processing and an overall optimization of sheet utilization and run time nesting results.

6. Material Library

More material info options, material coating choices, skeleton / remnant creation and material loading tower info have been added, giving users more precise control over their material inventories.

7. Tower Inventory

The Tower Inventory option lists read-only info on the current material in the tower. This option functions with newer Amada material towers such as the AMS 3015 CLT and ASR 3015N TK.

8. SDD Create Schedule

Users who are connected to an SDDJ Server may create schedules containing pre-prepared jobs in the SDDJ Server. The same schedule will simultaneously be sent to the AP100US Schedule List.

9. License Manager

The AP100US License Manager has been completely overhauled. The user can now activate, update, check out or transfer a license and import Amada drivers and machines all in one streamlined utility. Users can also quickly switch between running AP100US with a local license or a network license on a corporate server.

10. Label Text Function

To assist users in tracking production parts during the manufacturing process, text may now be placed on a part using simple interface commands. Text may be placed on individual parts, or all the parts on a sheet.

11. Fast Cut Enhancements

A new Advanced Settings window has been added, allowing the user to further customize the Fast Cutting process. Also, patterns that don't share a common centerpoint can be included in the Fast Cutting process.

12. Batch Conversion

Use this option to batch convert DXF and DWG files to AP100US-compatible .PRT files, which can be loaded immediately into the Sheet Wizard.

13. Layer-based Settings - Direct Reference

The Direct Reference tool action forces a part to rotate to match the grain direction of a sheet.

14. Improved TK Part-Remover Arms Graphic Display

When placing the part remover arms it is very important for the user to be able to visually see exactly where the arms are in correlation to the turret. This new ASR-NTK module feature gives the user a clear picture of the location of the part remover arms when parts are being removed, accurately displaying the PR arms to allow the user to accurately select the last hit.

15. Sheet Layout>Skeleton / Remnant options

This option allows the program to create and include existing skeleton sheets in a job during nesting. Skeleton sheets are created according to a ratio of used to unused portions of the sheet. Prioritize skeleton / remnant usage by selecting a sheet type in the priority list.

16. MCode Option for Combo & Punch Machines

AP100US now supports MCA files that contain conditions for Special Tools. Used with Combo and Punch machines, this read-only MCA info can help the user to maximize special tool actions, which will speed up special tool processing and result in an improved Run Time.

Fixed Issues v2019.1

ATC Storage

1. ATC import CSV option fails when using customer's file.

CADCAM

2. In a cutting machine, the View Sequence command causes a crash when in part view.
3. Slug Destroy Settings text updated as required.

Job Wizard

4. The part name is incorrect after restoring an old pack up file in Job Wizard.

NC Code

5. Material Code that is output to the driver is incomplete.
6. When using the Wizards, the NC code for subroutines is incorrect when a large amount of sheets are nested and sequenced with code generation.
7. The NC code for a pre-punch is not being output to the NC file.

Quick Access Toolbar

8. When the Slug Destroy option is added to the Quick Access Toolbar and then AP100 is closed, the CADCAM system will fail to launch for a new session.

Reposition

9. When auto-sequencing, the system repositions the sheet twice.
10. The boundary of the part is being cut twice before reposition.

Run Time

11. M96/M97 isn't recognized in the Run Time module; therefore the run time results are incorrect.

Sheet Wizard

12. Sheet Wizard should nest more parts on one sheet.
13. The Show Material Property... switch in Advanced Settings is removed; Grain Direction & Shelf # in Layout Settings are now always in view.
14. After turning on "Show Support Pins", the customer's IGA files batch loaded via CSV causes an "Out of Memory" error.

Tool Info

15. The Special Tool management name field is empty when using a special cluster tool.

Unload

16. An "Out of Range" warning displays when manually unloading after repositioning and auto-cut sequencing.

Work Chute

17. When viewing the sequence, the work chute (trap door) open/close display runs too fast to be seen.

Fixed Issues v2019.2

Cut Features

1. Manual Split X or Manual Split Y appears on the wrong side of the part.
2. Loading a sheet and doing "Auto Grid Split Sheet" will crash AP100US.

Generate NC

3. When generating NC view with a packup file, an error message displays.
4. An error dialog displays when generating NC view with the attached customer file.

Input / Output

5. Saving a "NEW SHEET" overwrites the new *.sht file that will be opened.
6. The 'Save changes to the sheet?' dialog should not display when there are no parts on the sheet.

Inquire Tool

7. If a tool is inquired and the die clearance is changed, it sets the over travel and dead zone to zero for the station.

Job Wizard

8. The part name becomes incorrect after loading a part into the Job Wizard.
9. Sheet runtimes are altered in the Job Wizard sheet reports.

License Manager

10. The License Manager does not open if the user does not have Administrator privileges.
11. If the product key is incomplete or an incorrectly formatted GUID, the product key cannot be activated and a misleading error dialog will display.
12. A "Product key has been activated" error displays after reinstalling AP100US 2019.1 multiple times.

Material Library

13. If Material Description and Coating are added in the Master list in the Material Library, they do not appear in the sheet display screen.

Preferences

14. The Cut Boundary setting in Preferences>Tooling is not working correctly. A separate Tool Gouge switch has been added.

Run Time

15. G117 code is not supported in the Run Time calculation; 00:00 : 01 always shows.

Sequence

16. Some patterns haven't been sequenced after repositioning.
17. The trace line is completely inaccurate with the attached customer file.

Sheet Wizard

18. When adding a part in Sheet Wizard the "Save changes to the sheet?" dialog should not display.
19. Tools are missing after nesting in Sheet Wizard even if Replace Tool is checked on.

Tool Assignment

20. When undoing a punch tool assignment all the way back to the original state, the tool changes to a cut tool.

Trace Line

21. Trace line and NC code become incorrect after editing the trace line.

Fixed Issues v2019.3

Edit Material

1. The Apply Button in the Material Info> Punching Microjoints panel is disabled.

Input / Output

2. If AP100US is launched by double-clicking a sheet file and the viewing speed is set to 0, the system hangs up at the splash screen.
3. AP100US crashes after loading the new JKAX format from AMNC-3i.

Report

4. When “Zoom All Before Print” in Print Settings is checked ON, the boarder size will automatically be decreased, which enlarges the part/sheet drawing to full page.

Server License Manager

5. The Server License Manager failed to start due to a missing VC++ 2005 redistributable package.

Stacking Report

6. When printing a Stacking Report, if parts were grouped the system was only printing the original part in the group. Other parts in the group were not being printed.

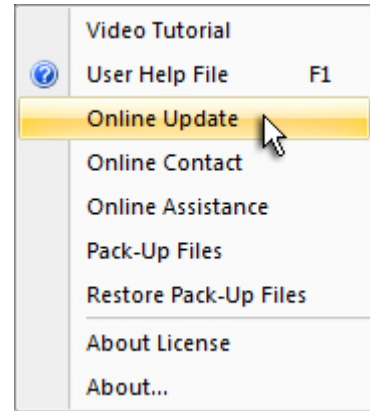
Sheet Wizard

7. The Sheet Wizard crashes when the Advanced Setting>Tool Sequence Priority option is checked ON and Cancel is clicked in the Tool Sequence Priority window.

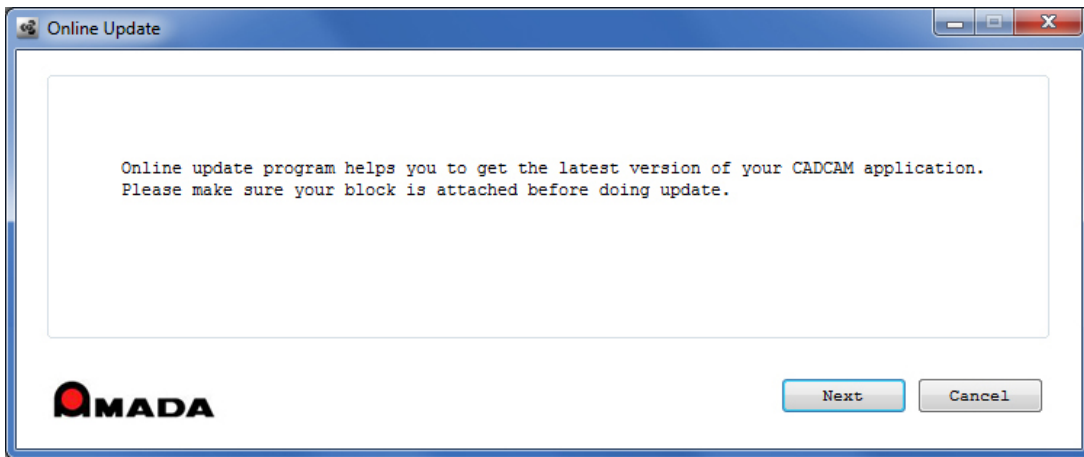
Update Installation via Online Update

If you have access to the Internet, use the Online Update utility to **update** your Amada CAD/CAM program to the latest version. (Update applies to versions from AP100US v8 / FabriWIN v12 to AP100US v2016 / FabriWIN v2016.) Simply select "Online Update" from the AP100US (or FabriWIN) program Help Menu to begin.

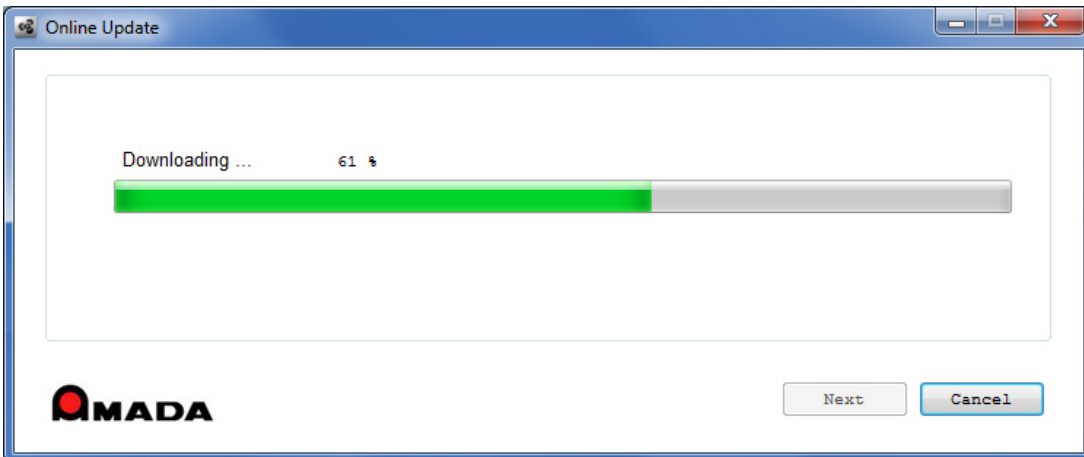
During installation the system will close all Amada CAD/CAM programs. Please back up your files and clear Read-only attributes assigned to AP100US (or FabriWIN) to allow the installer to access these files.



1. Click **Next** in the first Online Update screen to appear.

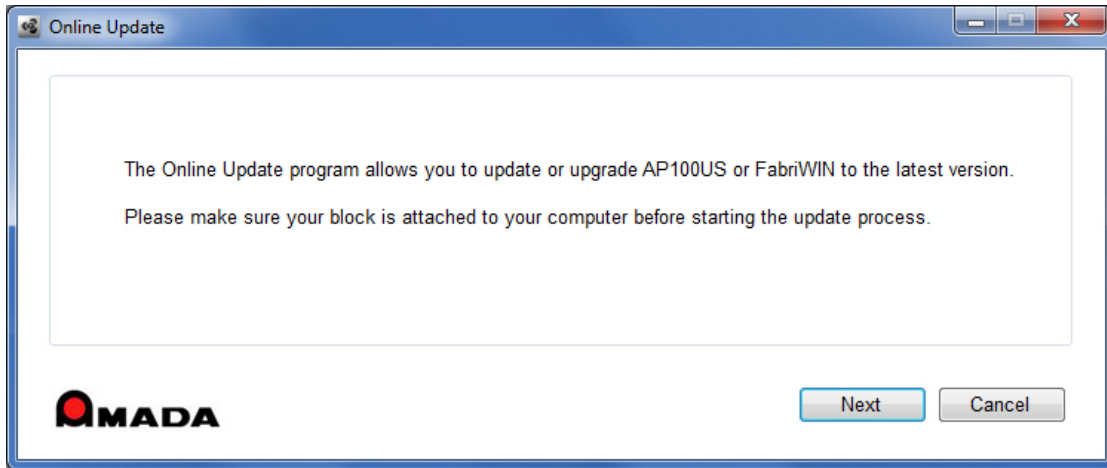


2. Allow the Update to download.

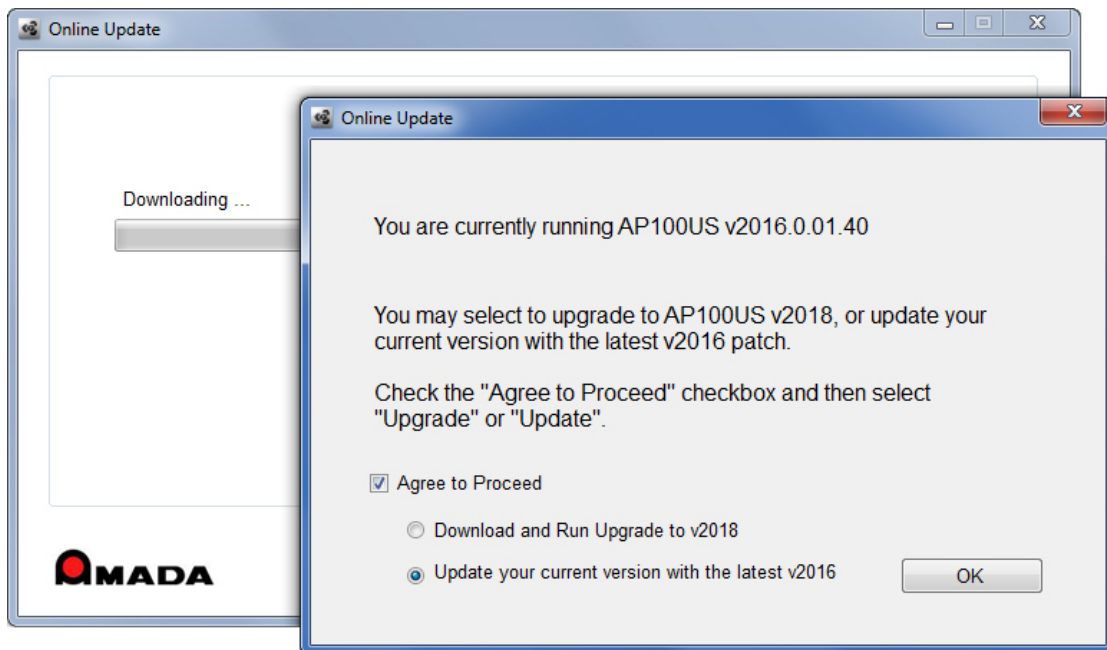


3. The option to **Update** your current version with an AP100US (or FabriWIN) patch, or **Upgrade** to the latest version of AP100US is offered. (This section of the documentation covers **Online Update** only.)

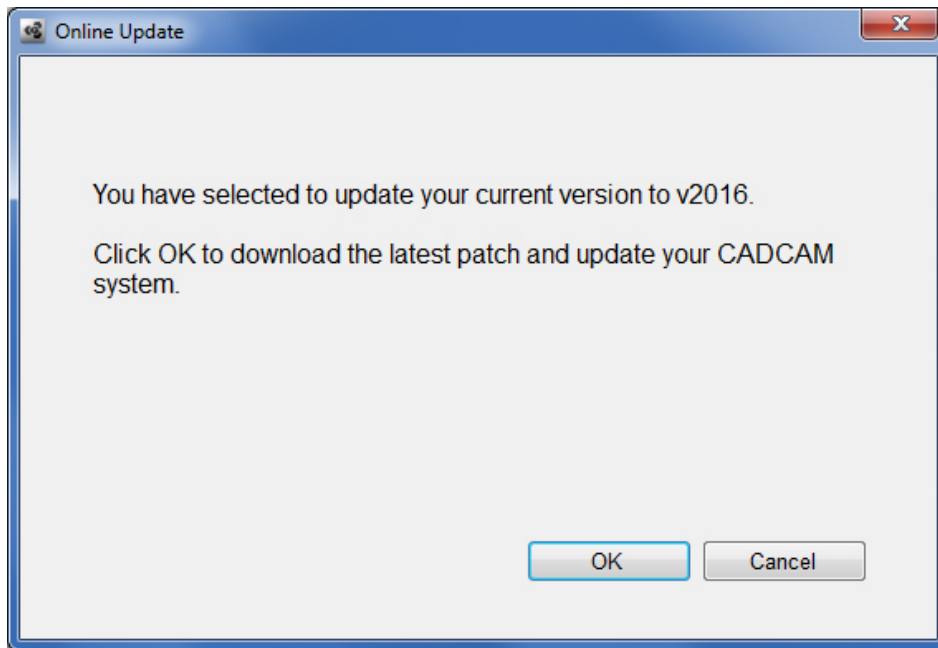
Click **Next** to proceed.



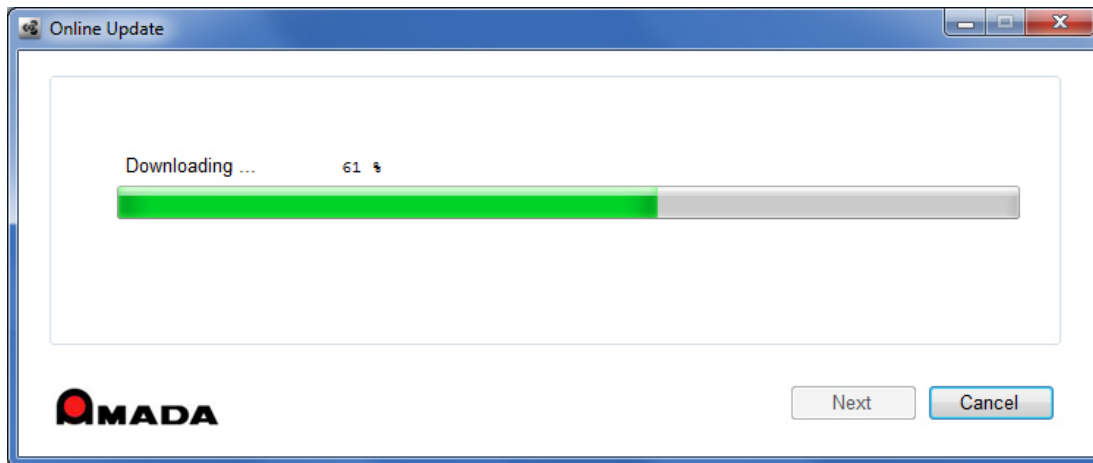
4. The system detects your program version. To update AP100US (or FabriWIN) you must check **ON** the **Agree to Proceed** checkbox and then select **Update your current version**. Click **OK** to proceed.



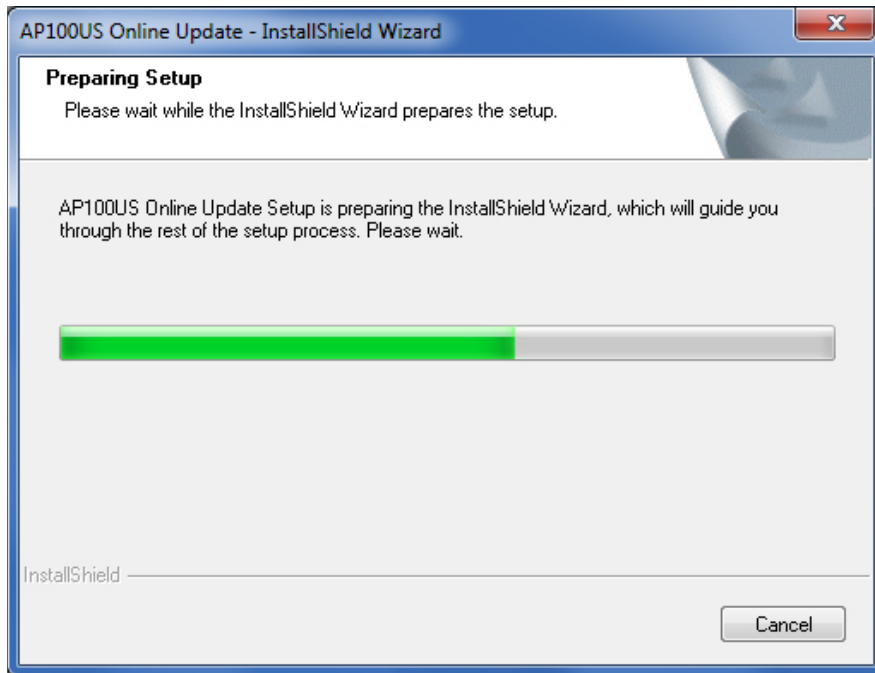
5. The system confirms your decision to update to the latest patch for AP100US (or FabriWIN).
Click **OK** to proceed.



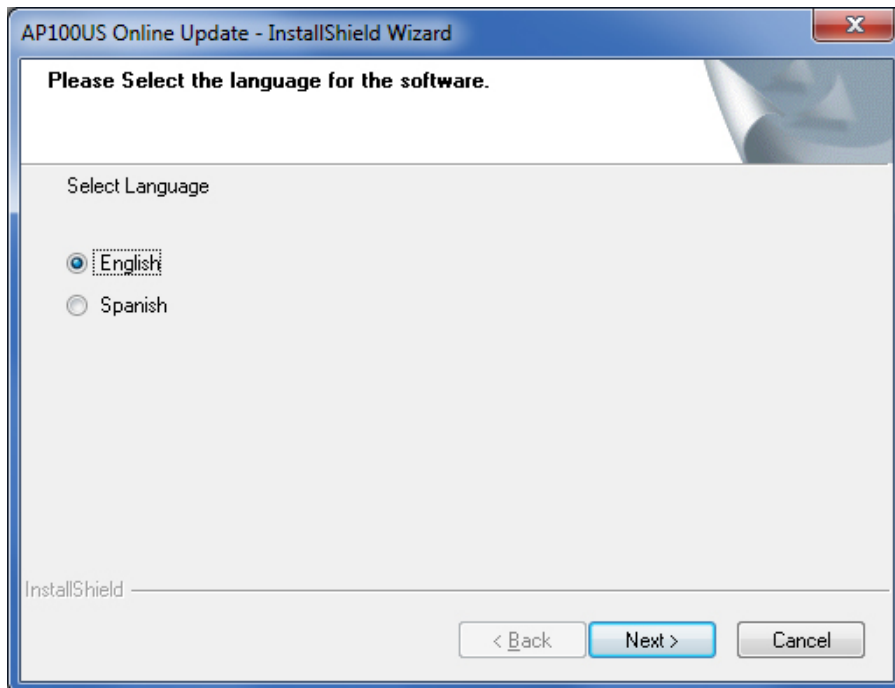
6. Allow the Update to download.



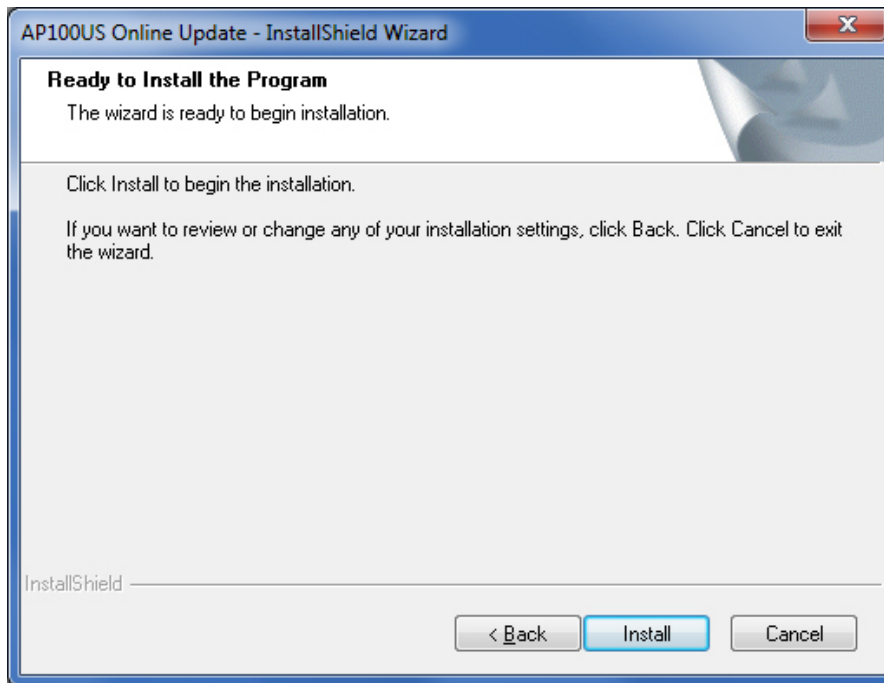
7. Allow the InstallShield Wizard to prepare the setup.



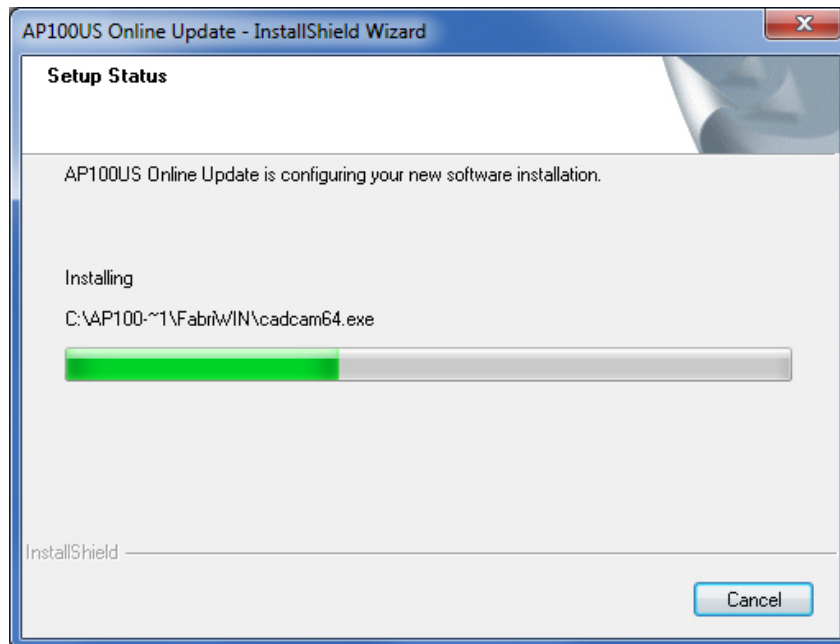
8. Select the language for the update and then click **Next** to proceed.



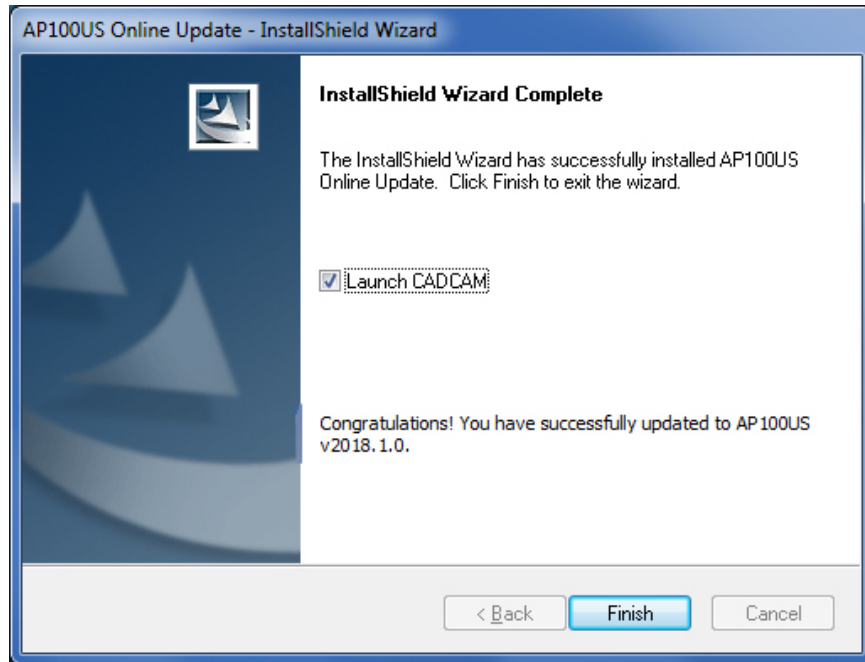
9. Click **Install** to begin installing the update. During update installation your current files (such as "PARTS" and "SHEETS") will remain intact in the installation folder.



10. Allow the update installation to be completed.



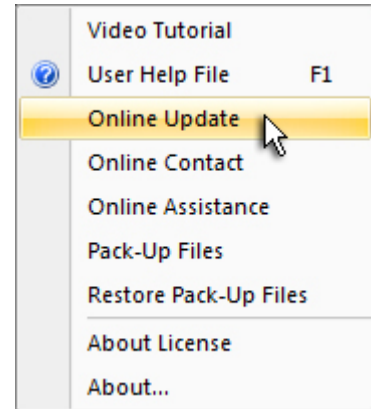
11. When the installation is completed, click **Finish** to close the installer. Check **ON** the **Launch CADCAM** button to immediately launch the program.



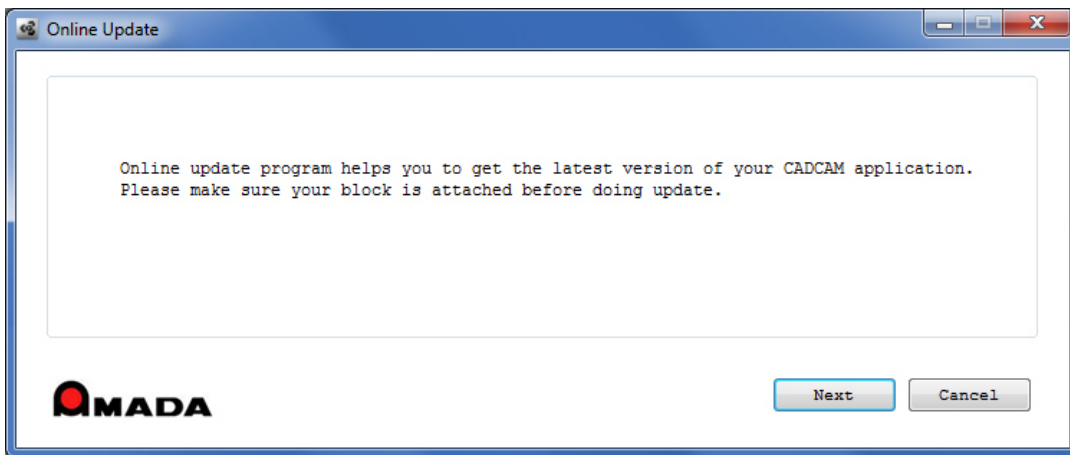
Upgrade Installation via Online Update

If you have access to the Internet, use the Online Update utility to **upgrade** your Amada CAD/CAM program to the latest AP100US version. (Upgrade applies to versions from AP100US v8 / FabriWIN v12 to AP100US v2016 / FabriWIN v2016.) Simply select "Online Update" from the AP100US (or FabriWIN) program Help Menu to begin.

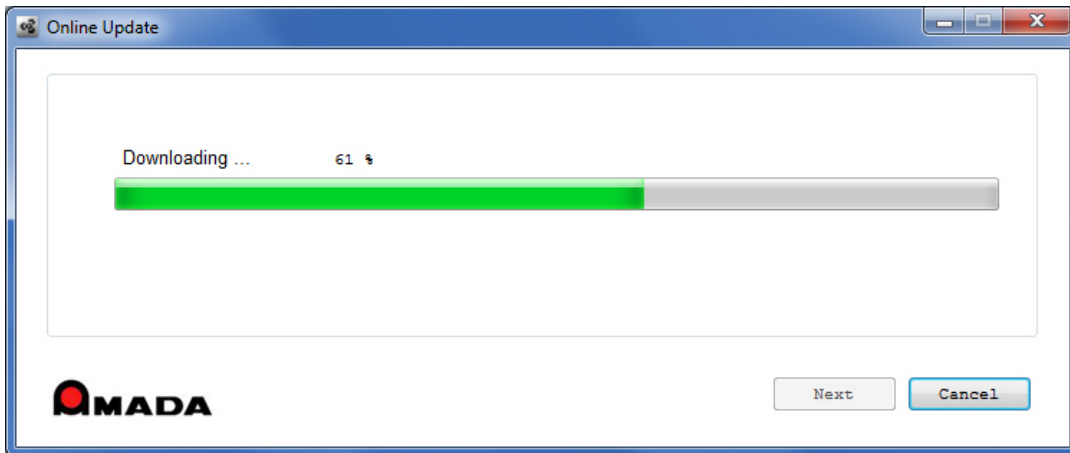
During installation the system will close all Amada CAD/CAM programs. Please back up your files and clear Read-only attributes assigned to AP100US (or FabriWIN) to allow the installer to access these files.



1. Click **Next** in the first Online Update screen to appear.

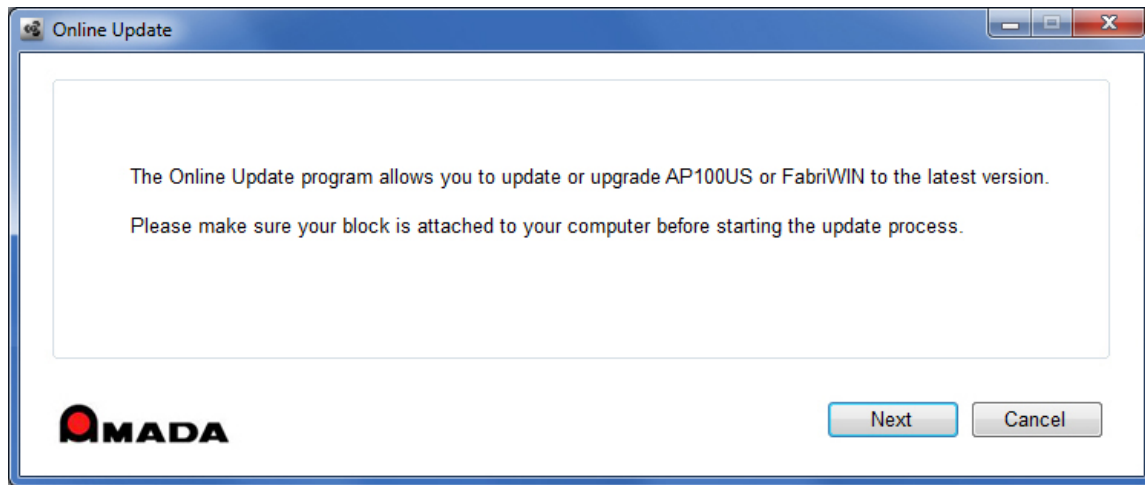


2. Allow the Online Update to download.

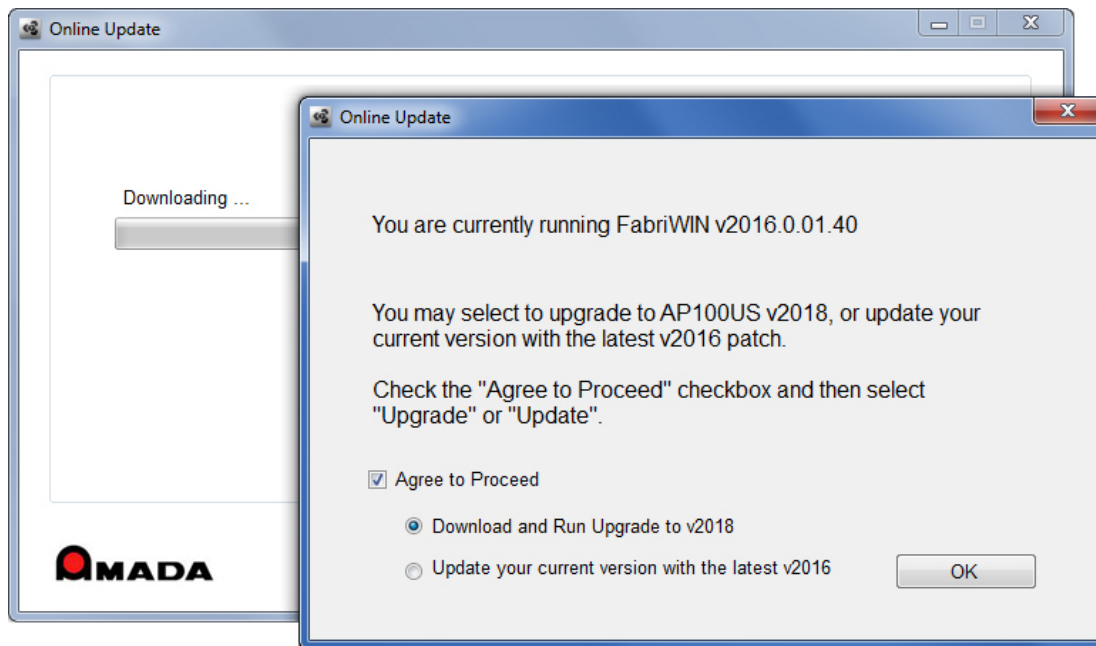


3. The option to **Update** your current version with a patch (for AP100US or FabriWIN), or **Upgrade** to the latest version of AP100US is offered. (This section of the documentation covers **Online Upgrade** only.)

Click **Next** to proceed.

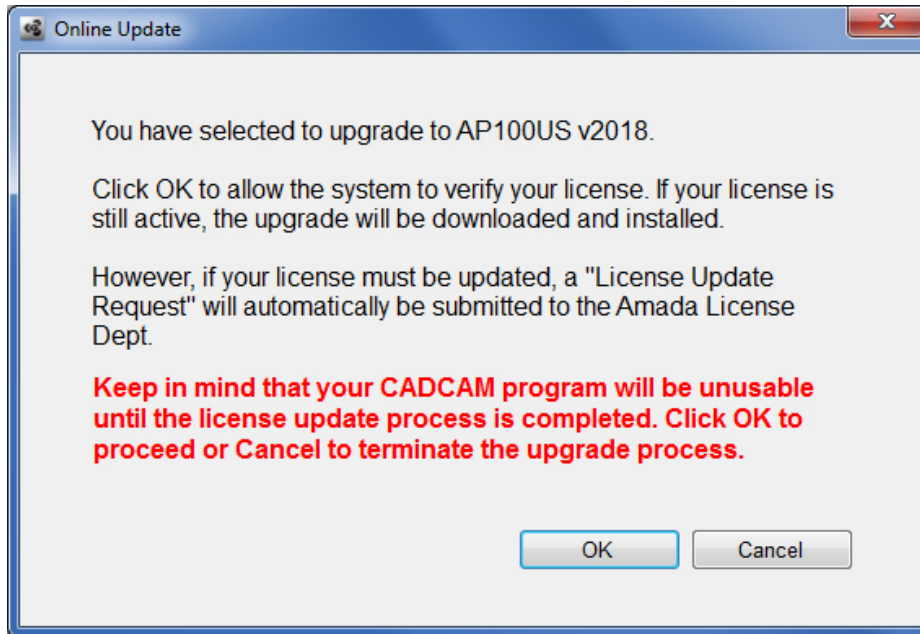


4. The system detects your program version. To upgrade AP100US (or FabriWIN) you must check **ON** the **Agree to Proceed** checkbox and then select **Download and Run Upgrade**. Click **OK** to proceed.

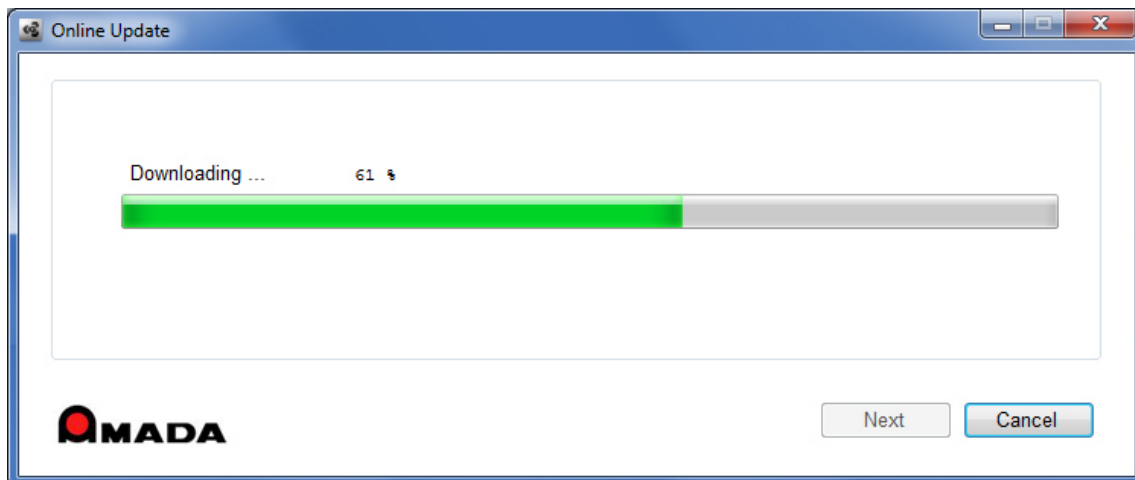


5. To upgrade to AP100US v2018 your user license must still be active. If the license is active, the installation will proceed normally when you click **OK**. When finished AP100US will be ready for use.

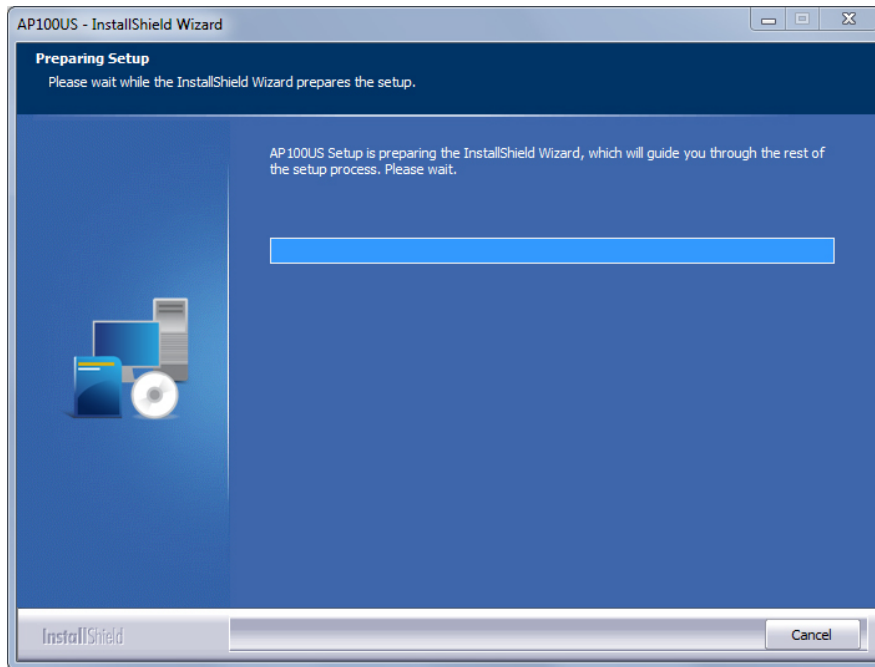
But if the system detects the license is inactive, you may still click **OK** to proceed with the upgrade, but when the installation is finished the system will (1) automatically send a license update request to Amada and (2) lock your CAD/CAM program, rendering it unusable until the license is renewed.



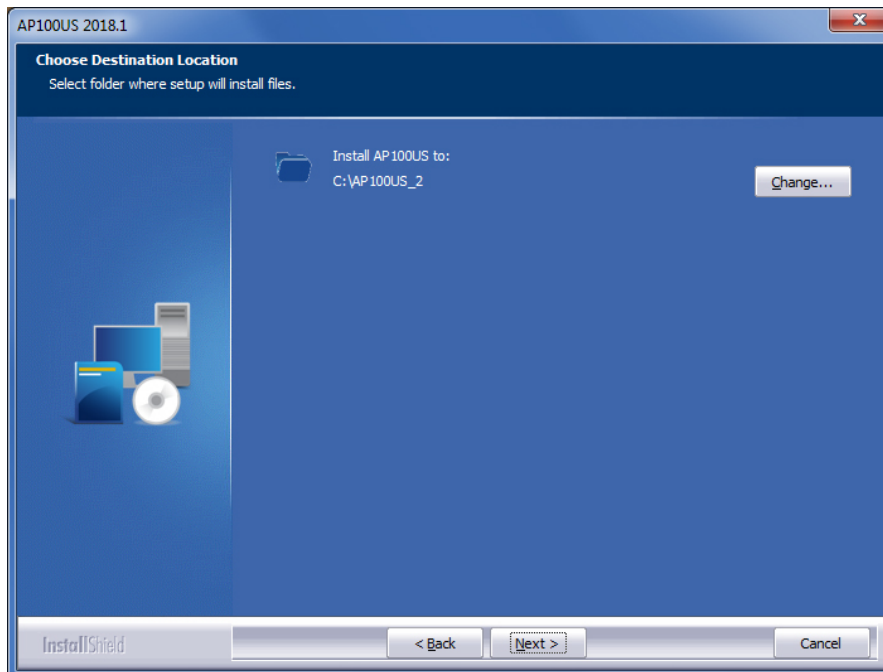
6. After clicking OK the download and installation will proceed. Allow the necessary files to download.



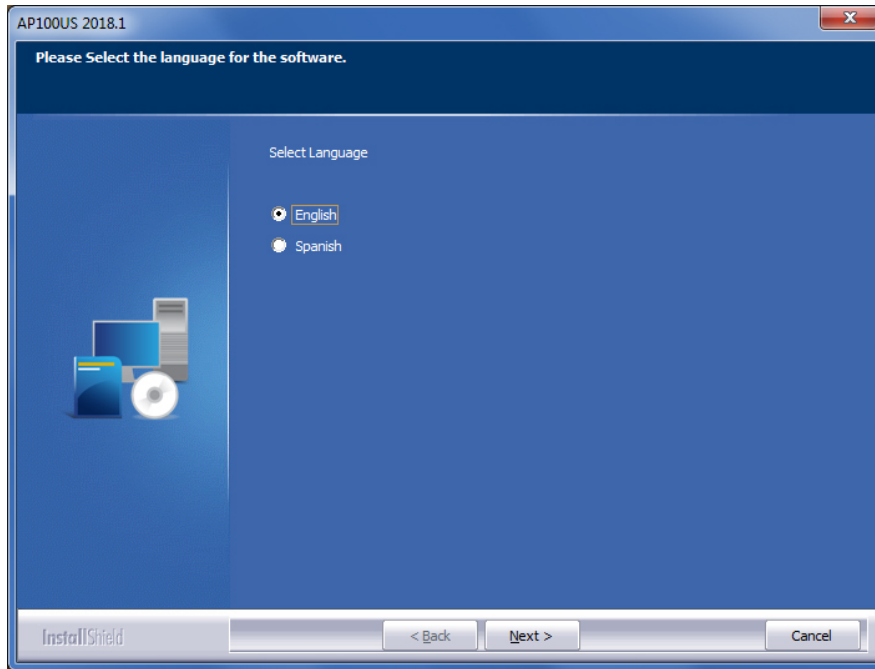
7. The InstallShield Wizard prepares the setup.



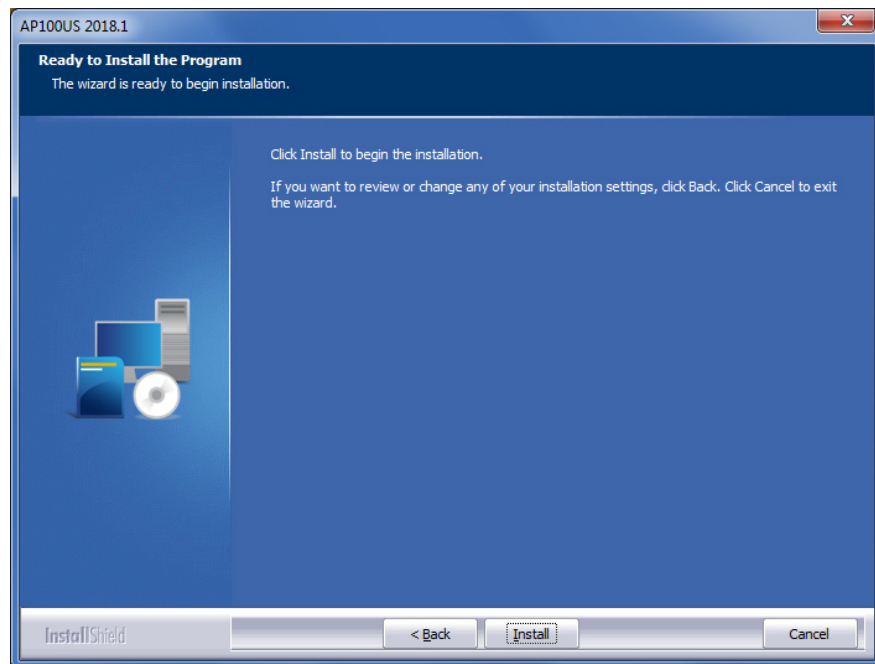
8. By default the system will prepare a folder for installation. Click **Change** to select another folder if desired. Click **Next** when ready to proceed.



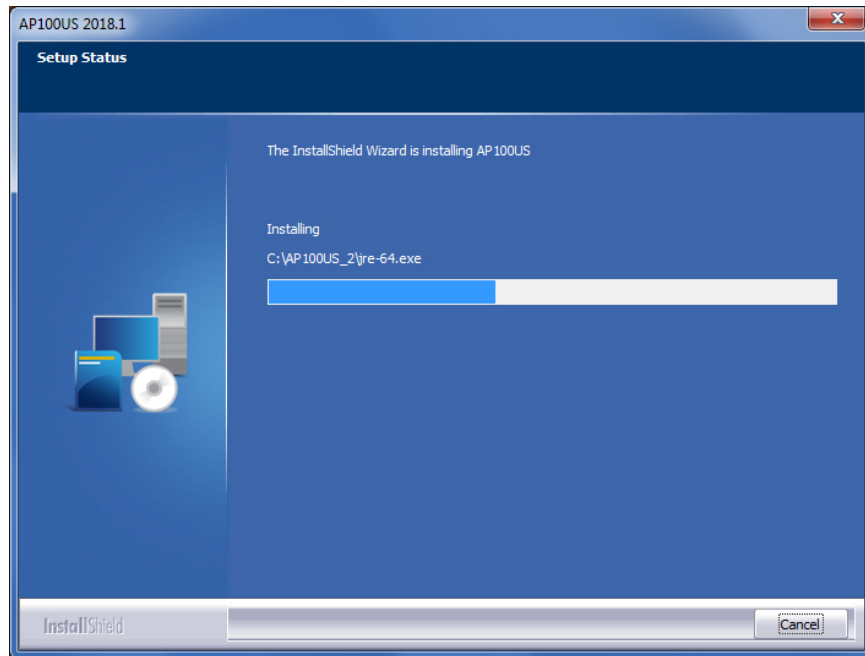
9. Select a language for the installation and then click **Next** to move ahead.



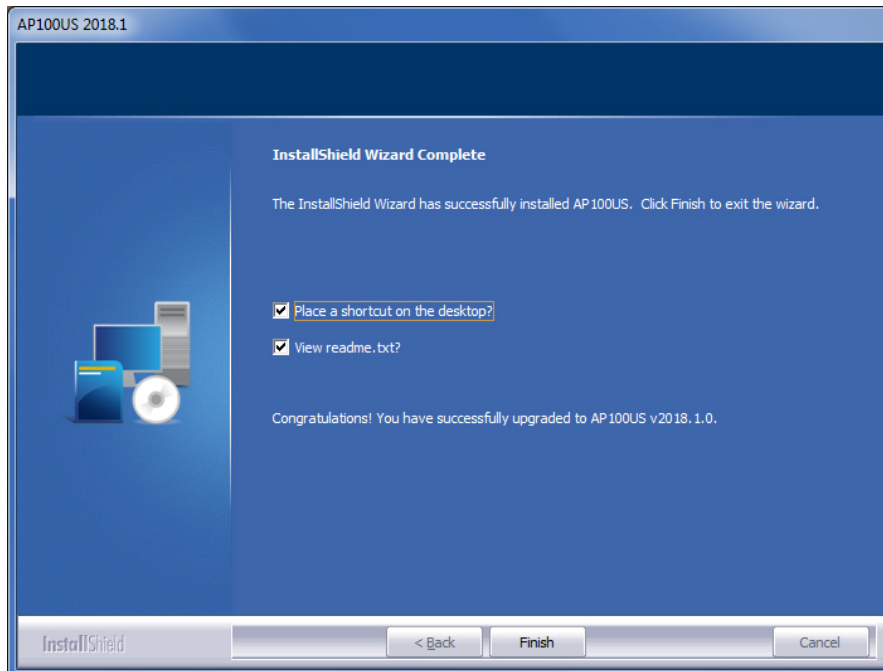
10. Click **Install** to begin the actual installation of the upgrade. During upgrade installation your current files (such as "PARTS" and "SHEETS") will be copied over to the upgrade folder.



11. The system installs the new upgrade program files.



12. When the installation is complete, select to place an icon on the desktop and view the ReadMe file. Click **Finish** to close out the installer and begin using AP100US v2018.



Contact Information

Amada America Inc.
7025 Firestone Blvd.
Buena Park, CA 90621
1-800-254-7532, Ap100usSupport@amada.com

For more information about Amada and its line of products, please visit www.amada.com.

*Microsoft Windows Professional, Ultimate, Home Premium, Windows 7, Windows 8 and Windows 10 are registered trademarks of the Microsoft Corporation in the United States and other countries.